

YELLOW FEVER SITUATION REPORT

Serial Number: 007	July 2024 Monthly Sitrep
Epi Week:	27 - 31 as at 31 st July 2024
Reporting Month:	July 2024

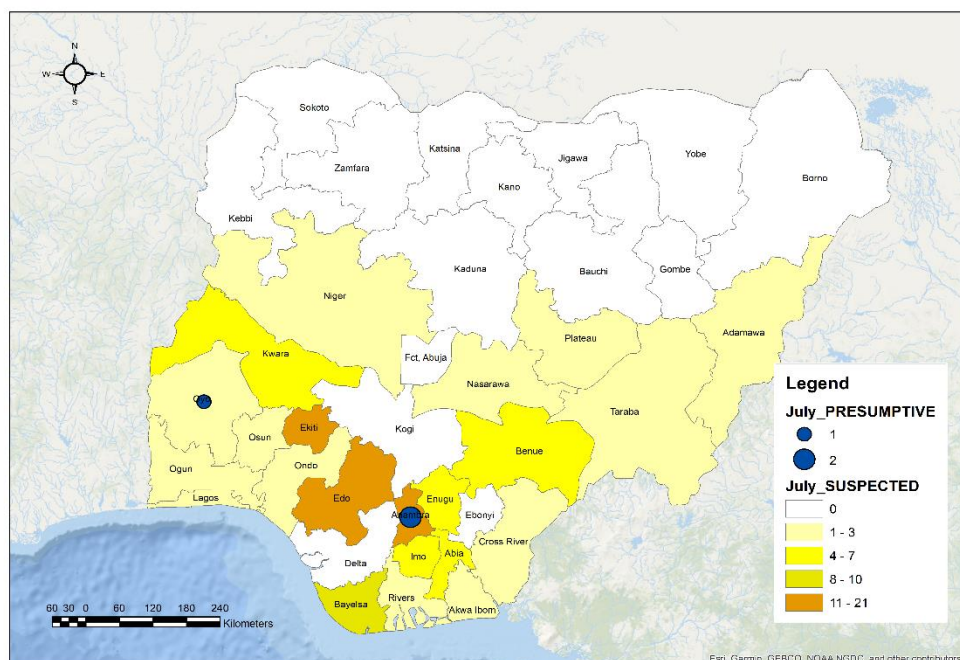


REPORTING MONTH: JULY 2024

HIGHLIGHTS

REPORTING PERIOD: 1ST JANUARY 2024 – 31ST JULY 2024

- The Nigeria Centre for Disease Control & Preventions (NCDC) continues to monitor reports of yellow fever cases in Nigeria.
- A total of 196 suspected cases were reported from 126 Local Government Areas (LGAs) across 32 states. The states include Abia (3), Adamawa (1), Akwa Ibom (5), Anambra (17), Bayelsa (3), Benue (2), Borno (10), Cross River (3), Delta (2), Ebonyi (1), Edo (6), Ekiti (10), Enugu (10), FCT, Abuja (1), Gombe (1), Imo (4), Jigawa (14), Kano (2), Katsina (10), Kebbi (18), Kogi (7), Kwara (27), Niger (2), Ogun (7), Ondo (3), Osun (1), Oyo (9), Plateau (7), Rivers (2), Taraba (5), Yobe (1) and Zamfara (2)..
- **Three (3)** Presumptive positive cases were reported within the reporting month from the University of Nigeria Teaching Hospital, UNTH [2] and Central Public Health Laboratory, (CPHL) Yaba [1] within the reporting month. These cases were reported from: **Anambra (2)** [Onitsha North (1) and Onitsha South (1)] and **Oyo (1)** [Iseyin-1].
- Three (3) inconclusive cases were recorded within the reporting month from Central Public Health Laboratory, (CPHL) Yaba (2) and University of Nigeria Teaching Hospital (UNTH) Enugu (1).
- **No** confirmed cases were recorded within the reporting month.
- **No** death was recorded among suspected cases in the reporting month.



196
SUSPECTED
CASES

32
STATES WITH
SUSPECTED
CASES

0
CONFIRMED
CASES

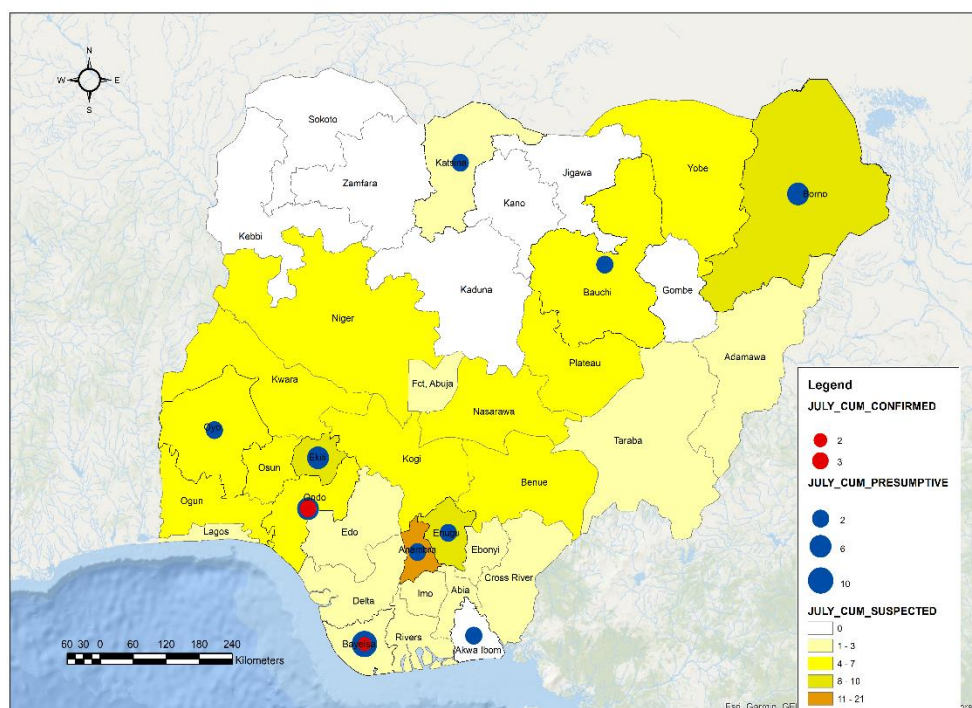
0
STATE WITH
CONFIRMED
CASES

0
DEATHS IN
CONFIRMED
CASES

0
STATES WITH
DEATHS IN
CONFIRMED
CASES

CUMULATIVE FOR 1ST JANUARY 2024 – 31ST JULY 2024

- Cumulatively from 1st January 2024 – 31st July 2024, a total of 1,524 suspected cases have been reported from 490 LGAs in 36 states including the FCT.
- The cases were reported from the following states: Abia (20), Adamawa (37), Akwa Ibom (13), Anambra (138), Bauchi (84), Bayelsa (43), Benue (32), Borno (70), Cross River (23), Delta (25), Ebonyi (10), Edo (39), Ekiti (66), Enugu (75), FCT (5), Gombe (7), Imo (28), Jigawa (79), Kaduna (31), Kano (8), Katsina (152), Kebbi (47), Kogi (36), Kwara (55), Lagos (11), Nasarawa (30), Niger (26), Ogun (49), Ondo (37), Osun (34), Oyo (37), Plateau (55), Rivers (24), Sokoto (24), Taraba (29), Yobe (21) and Zamfara (24).
- Total of **Thirty-one (31)** presumptive positive and **fourteen (14)** inconclusive results were recorded from the Nigeria Laboratory networks.
- These **presumptive positives** were from Central Public Health Laboratory, Lagos (CPHL) (9), National Reference Laboratory NRL (3), University of Nigeria Teaching Hospital, Enugu (UNTH) (3), University of Benin Teaching Hospital, Benin (UBTH) (10), University of Maiduguri Teaching Hospital, Maiduguri (UMTH) (6), while the **inconclusive** cases are from the University of Benin Teaching Hospital, Benin (3), University of Nigeria Teaching Hospital, Enugu (4) National Reference Laboratory, Abuja (1) and Central Public Health Laboratory, Lagos (6). These cases were from: Anambra (2), Akwa Ibom (2), Bauchi (1), Ekiti (1), Enugu (1), Imo (1), Ogun (1), Ondo (1), Osun (1), Oyo (2), Rivers (1). These samples have been shipped to IP Dakar for confirmation.
- Five (5)** confirmed cases were recorded within the reporting month. These cases were from: Bayelsa (2), Ondo (3).
- One (1)** death has been recorded from confirmed cases [**CFR = 20%**].
- Male to female ratio for suspected cases was **1.14:1** with males 813 (53.3%) and females 711 (46.7%)
- One thousand, one hundred and forty-two (74.9%) of suspected cases were predominantly aged 30 years and below.
- Two hundred and four (13.4%) of 1,524 suspected cases received at least one dose of the yellow fever vaccine.
- The NCDC is coordinating response activities through the National Multi-agency Yellow Fever Technical Working Group (YF TWG).



1,524
SUSPECTED
CASES

36 + FCT
STATES
WITH
SUSPECTED
CASES

5
CONFIRMED
CASES

2
STATES WITH
CONFIRMED
CASES

1
DEATHS IN
CONFIRMED
CASES

1
STATES WITH
DEATHS IN
CONFIRMED
CASES

Table 1: Summary of yellow fever cases in Nigeria from 1st January – 31st July 2024

State	# Suspected Cases	# LGAs with suspected cases	# LGAs with confirmed cases	Laboratory Results					Deaths	
				Samples positive (IgM) & Inconclusive in NG)	LGAs with positive (IgM) & Inconclusive in NG)	Confirmed Cases (PCR)	Confirmed Cases (IP Dakar)	Total Confirmed Cases	# Deaths among Confirmed Cases [CFR] (%)	# Deaths among All Cases [CFR](%)
Abia	20	9	-	-	-	-	-	-	-	-
Adamawa	37	16	-	-	-	-	-	-	-	-
Akwa Ibom	13	12	-	3	3	-	-	-	-	-
Anambra	138	20	-	4	4	-	-	-	-	-
Bauchi	84	17	-	2	2	-	-	-	-	-
Bayelsa	43	8	1	10	5	2	-	2	1	1
Benue	32	16	-	-	-	-	-	-	-	-
Borno	70	22	-	6	5	-	-	-	-	-
Cross River	23	14	-	-	-	-	-	-	-	-
Delta	25	16	-	-	-	-	-	-	-	-
Ebonyi	10	5	-	-	-	-	-	-	-	-
Edo	39	17	-	-	-	-	-	-	-	-
Ekiti	66	16	-	5	4	-	-	-	-	-
Enugu	75	11	-	2	1	-	-	-	-	-
FCT Abuja	5	3	-	-	-	-	-	-	-	-
Gombe	7	3	-	-	-	-	-	-	-	-
Imo	28	17	-	1	1	-	-	-	-	-
Jigawa	79	22	-	-	-	-	-	-	-	-
Kaduna	31	12	-	-	-	-	-	-	-	-
Kano	8	8	-	-	-	-	-	-	-	-
Katsina	152	28	-	1	1	-	-	-	-	-
Kebbi	47	13	-	-	-	-	-	-	-	-
Kogi	36	17	-	-	-	-	-	-	-	-
Kwara	55	15	-	-	-	-	-	-	-	-
Lagos	11	7	-	-	-	-	-	-	-	-
Nasarawa	30	11	-	-	-	-	-	-	-	-
Niger	26	9	-	-	-	-	-	-	-	-
Ogun	49	16	-	1	1	-	-	-	-	-
Ondo	37	11	3	5	4	-	3	3	-	-
Osun	34	19	-	1	1	-	-	-	-	-
Oyo	37	21	-	3	3	-	-	-	-	-
Plateau	55	20	-	-	-	-	-	-	-	-
Rivers	24	13	-	1	1	-	-	-	-	-
Sokoto	24	8	-	-	-	-	-	-	-	-
Taraba	29	12	-	-	-	-	-	-	-	-
Yobe	21	8	-	-	-	-	-	-	-	-
Zamfara	24	11	-	-	-	-	-	-	-	-
TOTAL	1,524	503 (65.0%)	4 (0.5%)	45 (3.0%)	36 (4.7%)	2 (0.2%)	3 (0.2%)	5 (0.4%)	1 (20%)	1 (0.1%)

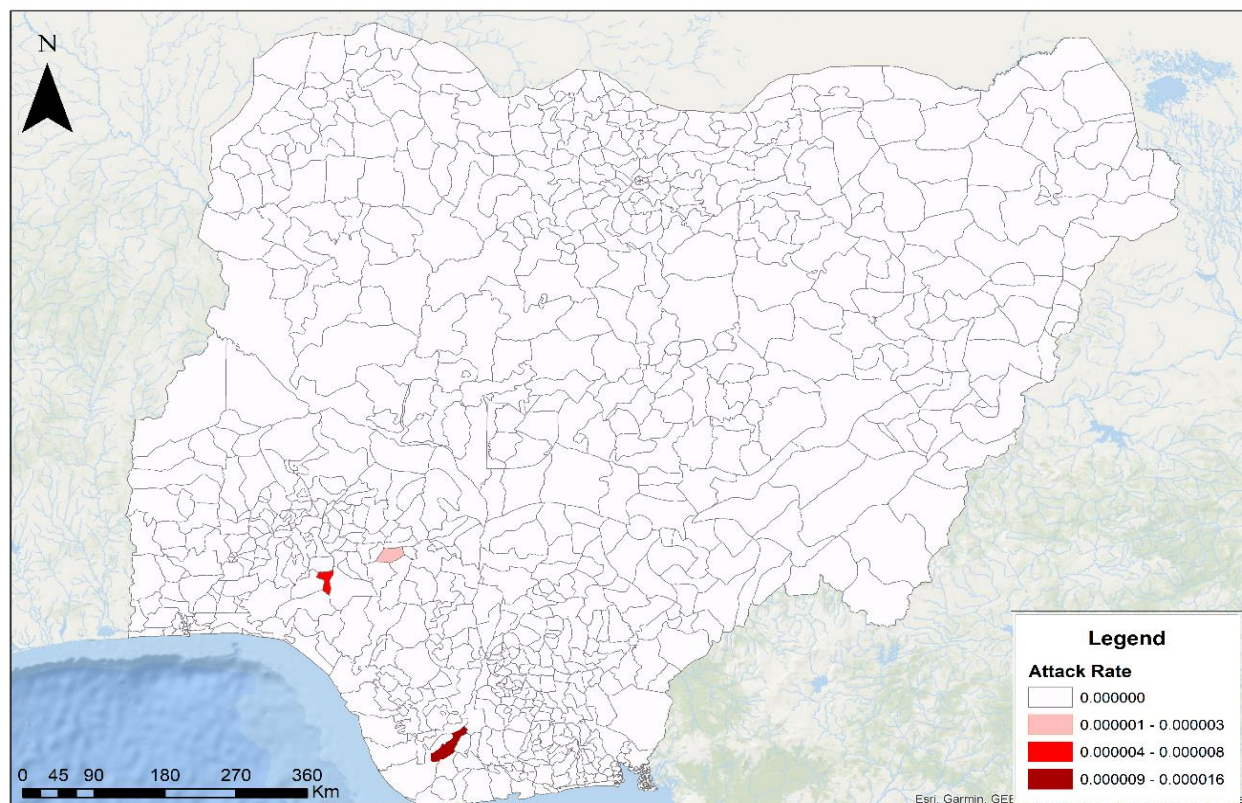


Figure 1: Map of Nigeria showing yellow fever outbreak attack rates in affected LGAs for July 2024

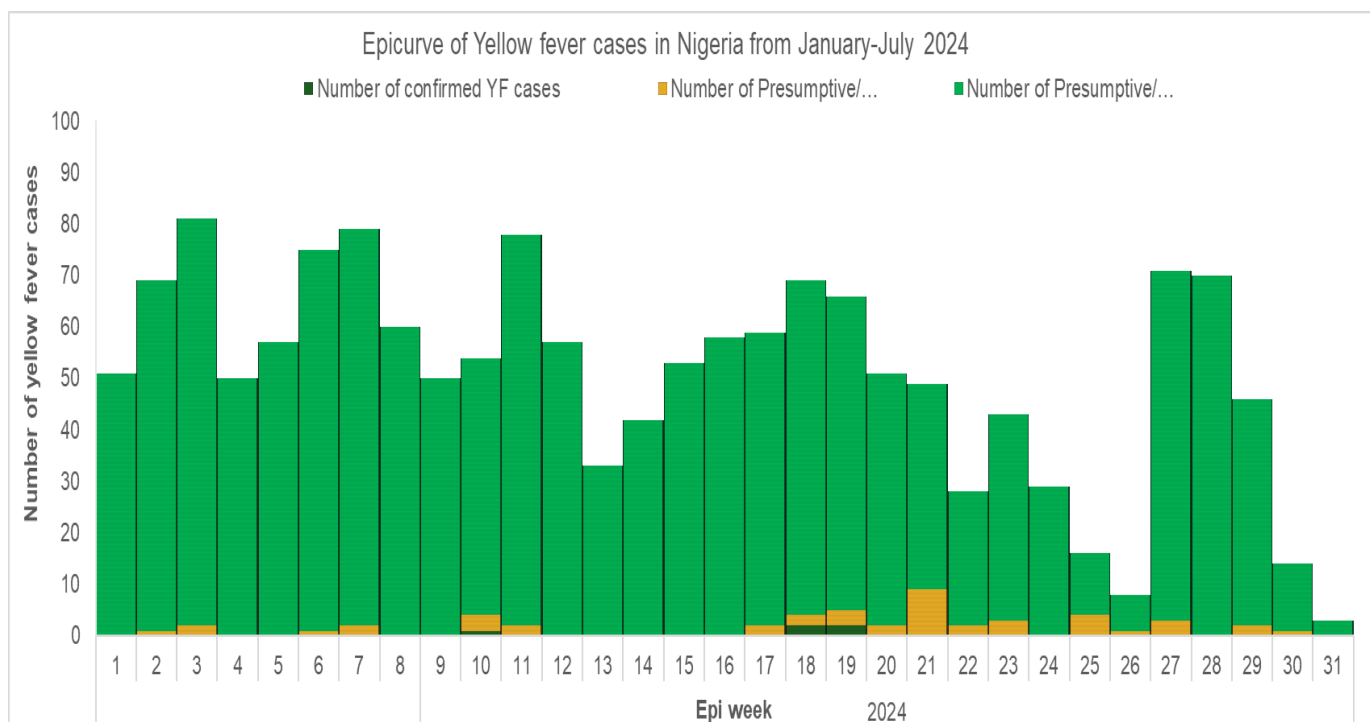


Figure 2: Epicurve of yellow fever cases in Nigeria from 1st January – 31st July 2024

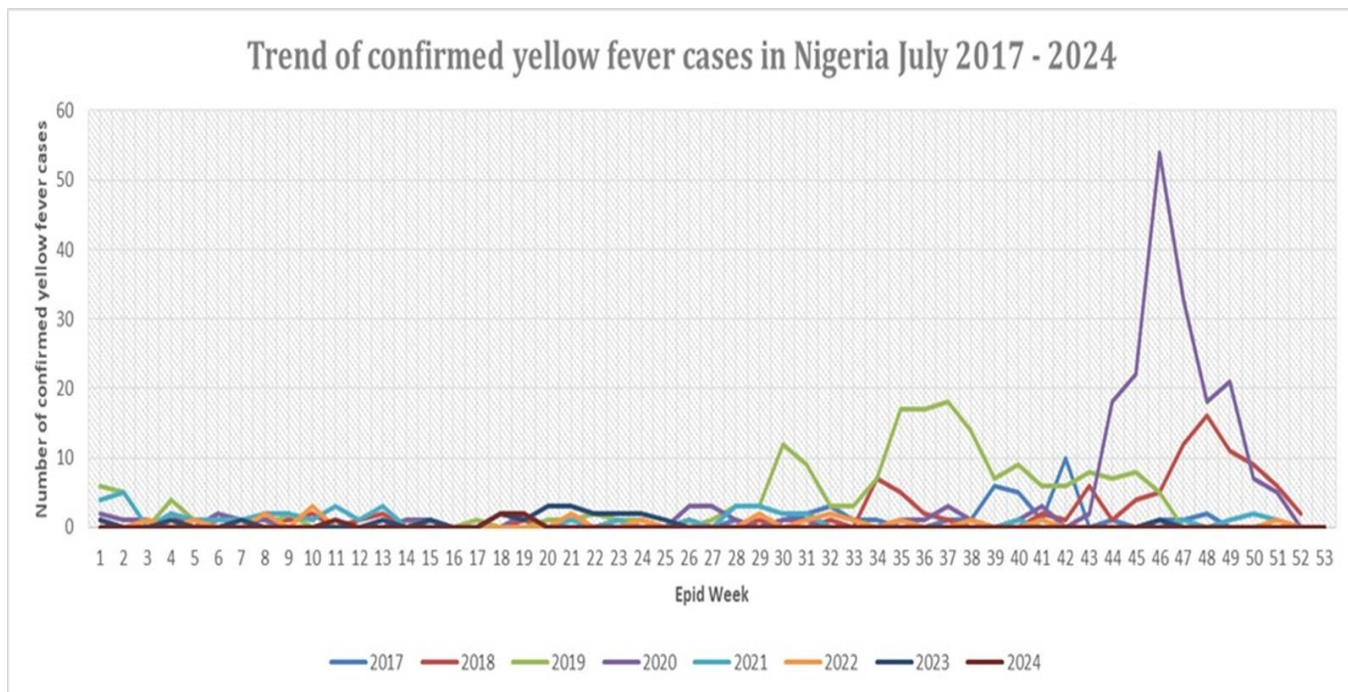


Figure 3: Trend of confirmed yellow fever cases in Nigeria 2017 – July 2024

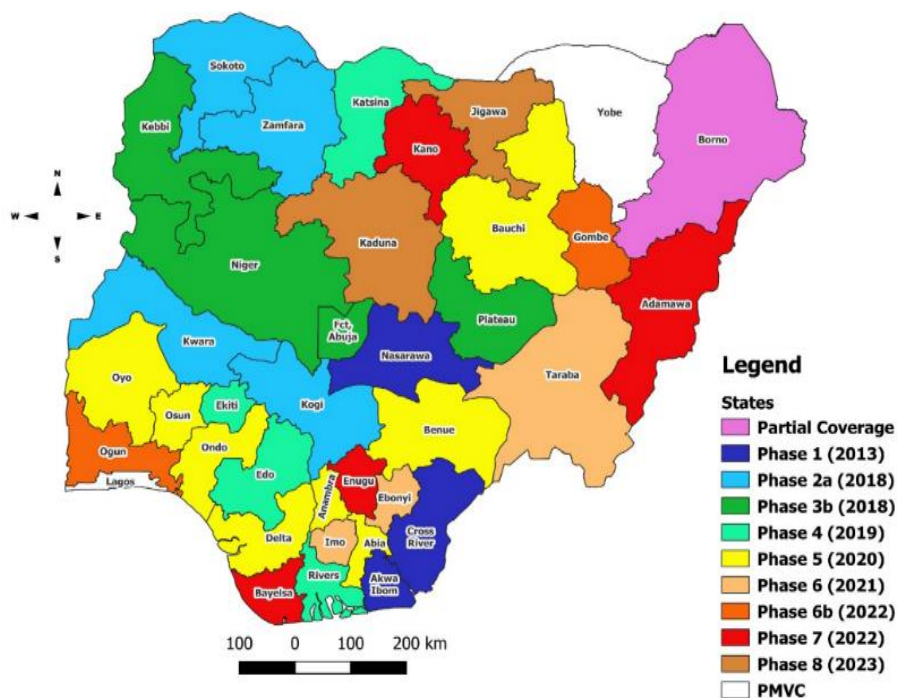


Figure 4: Map of Nigeria showing states and year of implementation of yellow fever massvaccination campaigns from 2013 – 2024

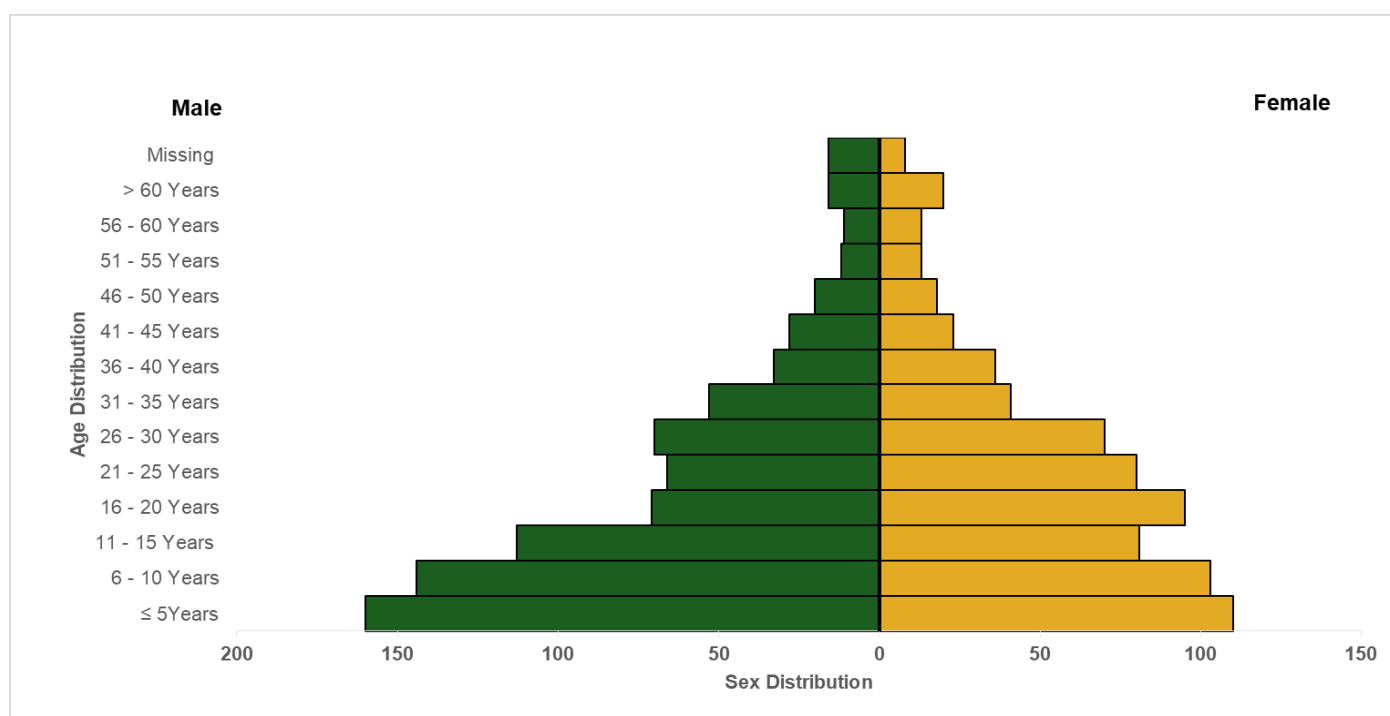


Figure 5: Age and sex distribution of yellow fever cases in Nigeria from January – July 2024

Partners

