



Dengue Fever Situation Report

November 2025

Key Points

Table 1: Summary of the current week, cumulative Epi week, current year and comparison with the previous year

Reporting Period	Suspected cases	Confirmed cases	Deaths (Confirmed cases)	Case Fatality Ratio (CFR)	States and LGAs affected (Confirmed cases)
November 2025	29	6	1	16.67%	State(s): 1 LGA(s): 3
Jan to Nov 2025	735	219	2	0.91%	State(s): 5 LGA(s): 17

Highlights (key summary)

In November 2025:

- Sokoto State reported 29 suspected dengue fever cases, making it the only state that recorded suspected cases in November 2025.
- Six (6) cases, representing 0.21% of the suspected cases, were confirmed by laboratory testing.
- Three (3) Local Government Areas (LGAs) in Sokoto State reported at least one suspected case of dengue fever.
- One (1) death was recorded among the confirmed cases.

From January – November 2025:

- Edo (537) and Sokoto (96) jointly accounted for 86.4% of the 735 suspected cases reported.
- Of the suspected cases, 219 (29.80%) were confirmed.
- The age groups 31 to 50 yeas accounted for 96 (43.84%) of all confirmed cases.
- A total of 2 deaths were recorded among confirmed cases, representing a case fatality rate (CFR) of 0.91%

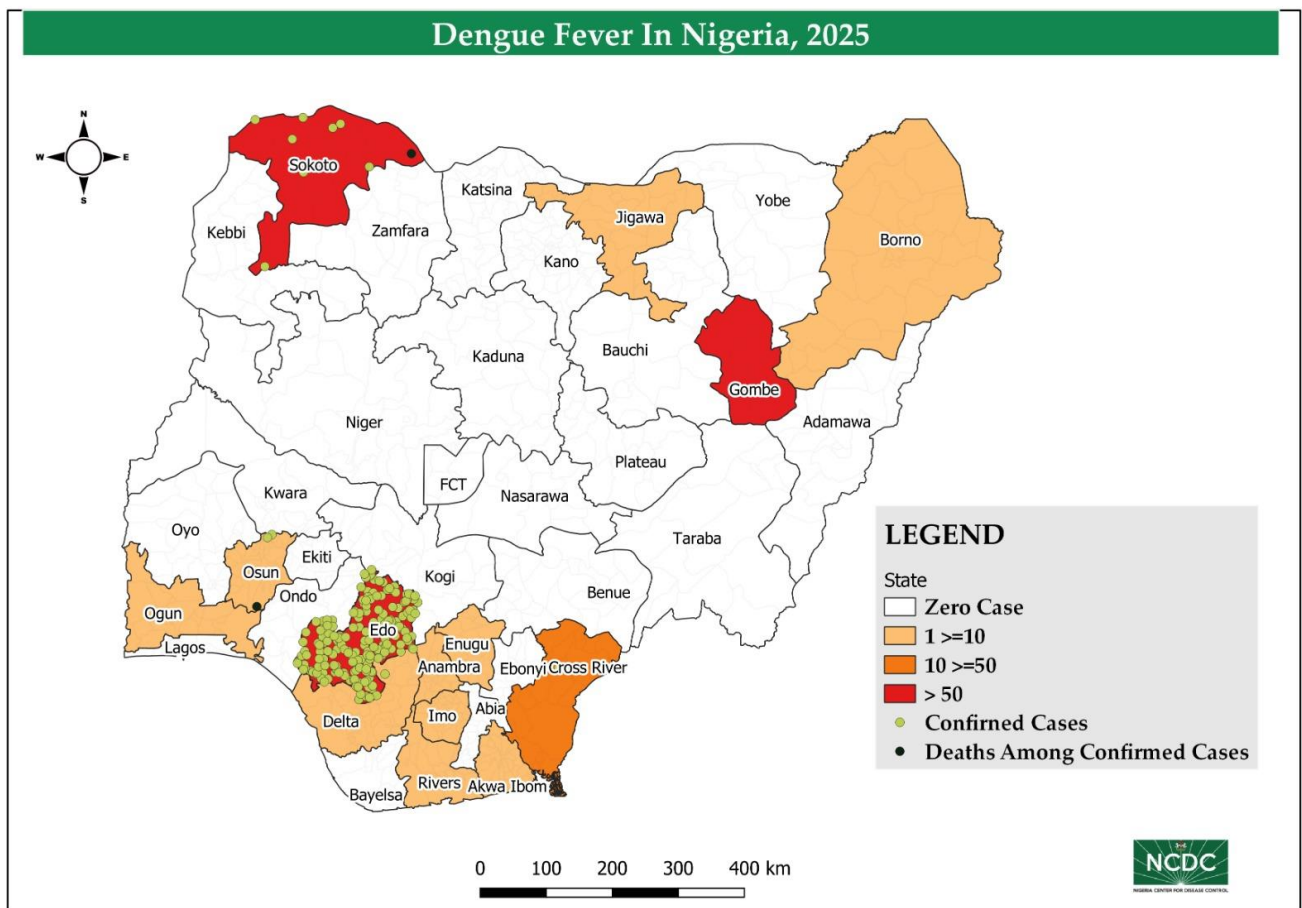


Figure 1: Map showing the dengue fever outbreak status in Nigeria: November 2025

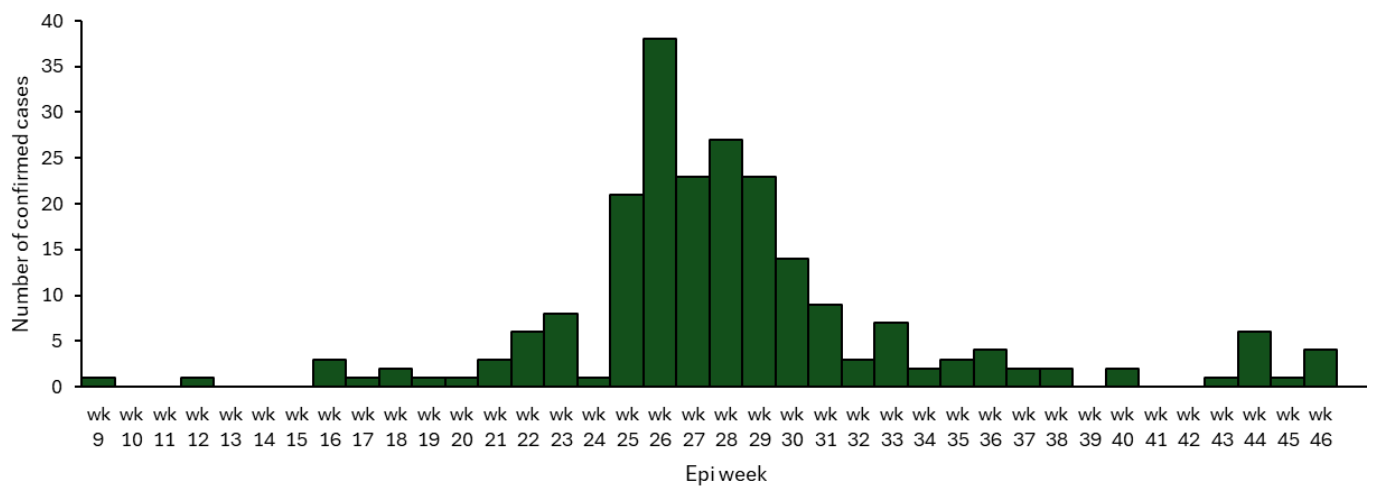


Figure 2: Epi-curve of confirmed dengue fever cases in Nigeria, 2025

Table 2: Distribution of dengue fever cases by states, November 2025

States	# Suspected cases	# Confirmed cases (%)	# Deaths in confirmed cases (CFR)
Abia	0	0	0
Adamawa	0	0	0
Akwa Ibom	0	0	0
Anambra	1	1	0
Bauchi	0	0	0
Bayelsa	0	0	0
Benue	0	0	0
Borno	1	0	
Cross River	1	0	0
Delta	9	1	0
Ebonyi	0	0	0
Edo	537	198	0
Ekiti	0	0	0
Enugu	2	0	0
FCT, Abuja	2	0	0
Gombe	57	0	0
Imo	2	0	0
Jigawa	1	0	0
Kaduna	0	0	0
Kano	0	0	0
Katsina	0	0	0
Kebbi	0	0	0
Kogi	0	0	0
Kwara	0	0	0
Lagos	0	0	0
Nasarawa	0	0	0
Niger	0	0	0
Ogun	3	0	0
Ondo	1	0	0
Osun	6	2	1
Oyo	1	1	0
Plateau	0	0	0
Rivers	4	0	0
Sokoto	98	15	1
Taraba	0	0	0
Yobe	0	0	0
Zamfara	0	0	0
TOTAL	735	219 (29.8%)	2

Table 3: Distribution of dengue fever cases by LGAs, November 2025

LGA	State	# Suspected cases	# Confirmed cases (%)	# Deaths in confirmed cases (CFR)
Onna	Akwa Ibom	1	0	0
Dunukofia	Anambra	1	1	0
Jere	Borno	1	0	0
Obudu	Cross River	1	0	0
Ethiope west	Delta	2	1	0
Ika north east	Delta	2	0	0
Ika north-east	Delta	1	0	0
Ika south	Delta	1	0	0
Okpe	Delta	1	0	0
Warri north	Delta	2	0	0
Egor	Edo	147	88	0
Etsako west	Edo	2	1	0
Esan c	Edo	1	0	0
Esan west	Edo	2	1	0
Ikpoba okha	Edo	81	23	0
Isoko north	Edo	1	0	0
Isoko north	Edo	1	1	0
Oredo	Edo	134	74	0
Orhionmwon	Edo	1	0	0
Ovia	Edo	1	0	0
Ovia north east	Edo	60	21	0
Ovia north-east	Edo	0	0	0
Ovia northwest	Edo	1	0	0
Ovia south west	Edo	5	0	0
Owan east	Edo	1	0	0
Ugele north	Edo	1	0	0
Uhumwonde	Edo	9	4	0
Oji river	Enugu	2	0	0
Amac	FCT	2	0	0
Balanga	Gombe	57	2	0
Ehime-mbano	Imo	1	0	0
Owerri municipal	Imo	1	0	0
Hadejia	Jigawa	1	1	0
Ado odo/ota	Ogun	3	15	
Ede south	Osun	1	0	
Ilesha east	Osun	1	1	1
Ilesha west	Osun	1	1	
Osogbo	Osun	2	0	
Akuku-toru	Rivers	1	0	0
Ikwerre	Rivers	1	0	
Obio/akpor	Rivers	2	0	
Kware	Sokoto	1	0	
Sokoto north	Sokoto	16	1	
Sokoto south	Sokoto	70	13	

Wurno	Sokoto	11	1	1
Ijedore	Ondo	1		
North west	Oyo	1	0	0
TOTAL		735	219 (29.8%)	2 (CFR = 0.91)

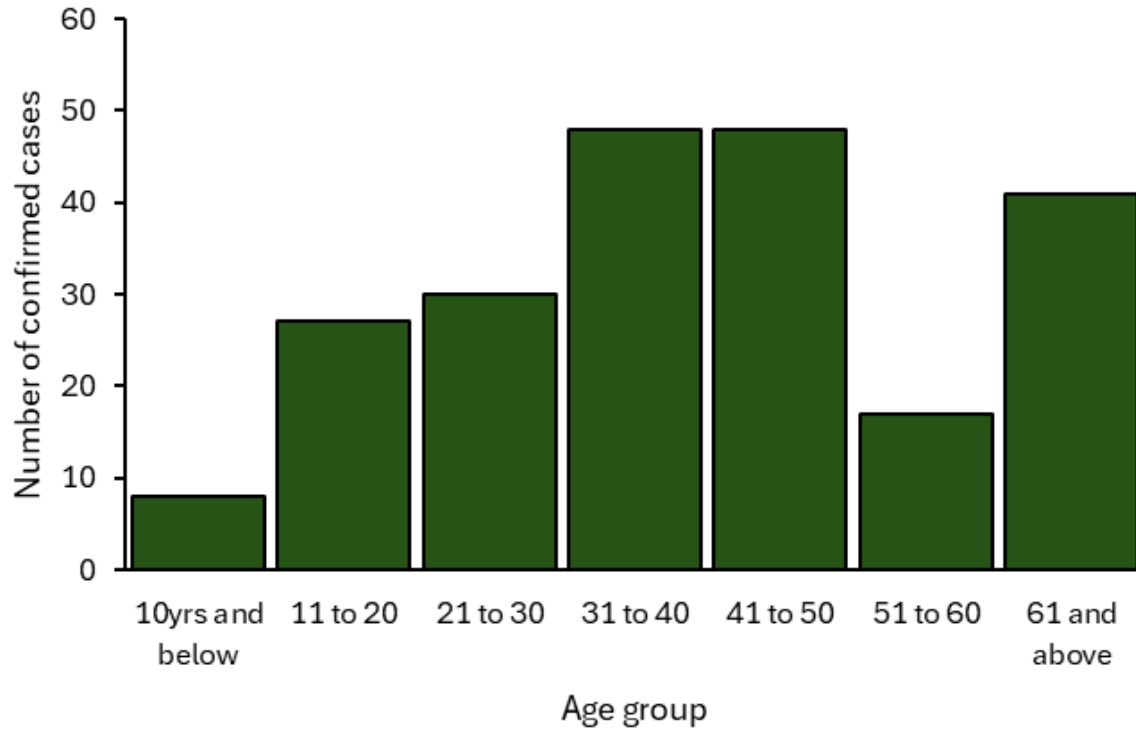


Figure 3: Age distribution of confirmed dengue fever cases in Nigeria, November 2025

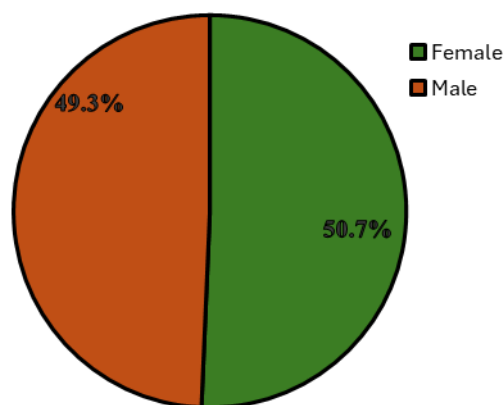


Figure 4: Sex distribution of confirmed dengue fever cases in Nigeria, November 2025

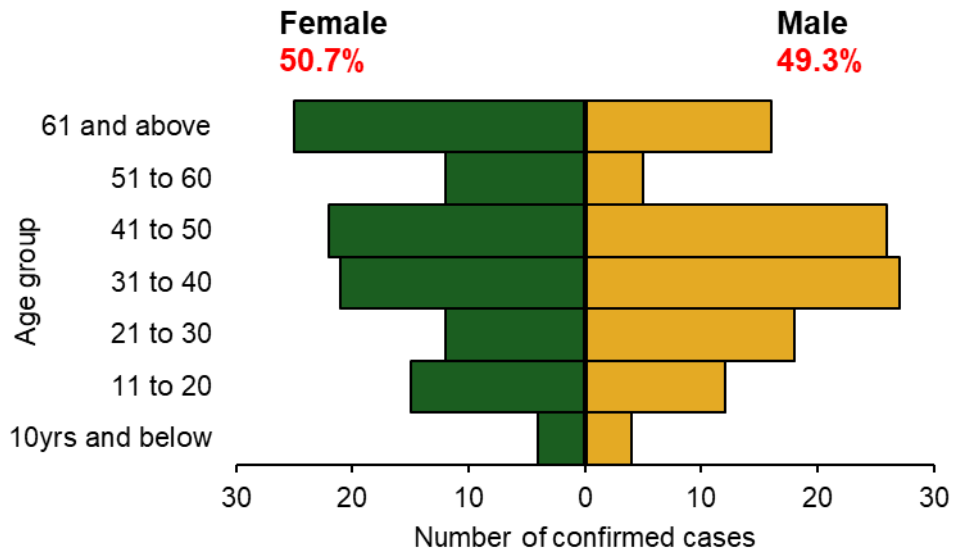


Figure 5: Age-sex distribution of confirmed dengue fever cases in Nigeria, November 2025

Data Source

Data Source: SORMAS, IDSR, and Laboratory reports

QUICK REFERENCE

Nigeria Centre for Disease Control and Prevention: www.ncdc.gov.ng