



# Measles Situation Report

December 2025

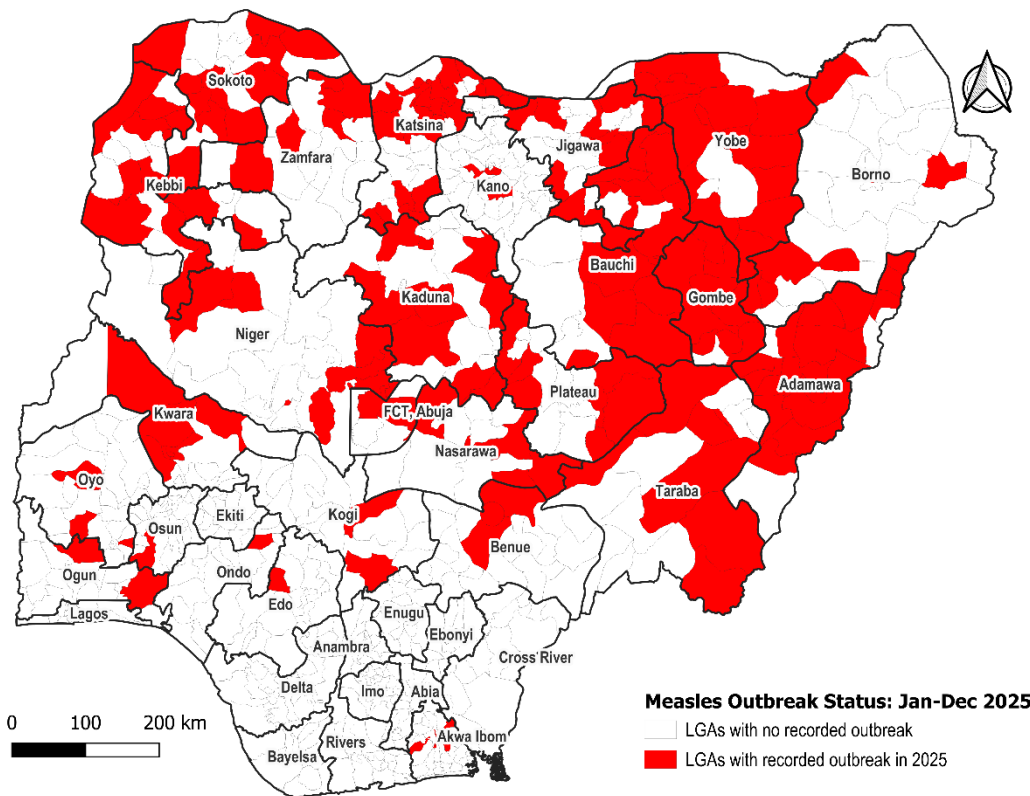
## Key Points

Table 1: Summary of the current month, cumulative Epi month, current year, and comparison with the previous year

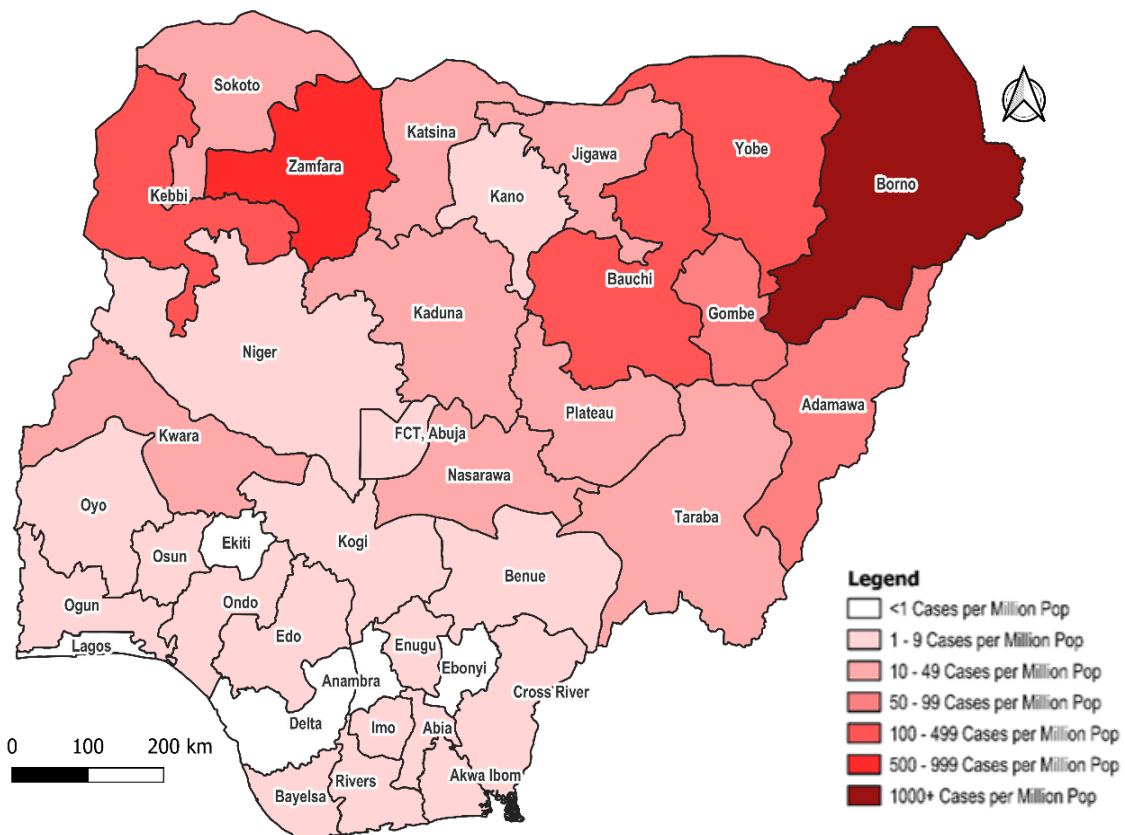
Reporting Period	Suspected cases	Confirmed cases	Deaths (Confirmed cases)	Case Fatality Ratio (CFR)	States and LGAs affected (Confirmed cases)
December 2025	132	0	0	0.0%	State(s): 0 LGA(s): 0
Jan to Dec 2025	27,433	19,225	153	0.8%	State(s): 36 + FCT LGA(s): 509
Jan to Dec 2024	20,059	9,821	77	0.8%	State(s): 36 + FCT LGA(s): 552

## Highlights (key summary)

- **In December 2025:**
  - Abia (36), Akwa Ibom (16), Imo (13), and Oyo (9) accounted for 56.06% of the 132 suspected cases reported
  - Of the suspected cases reported, 0 (0%) were confirmed (0 lab-confirmed & 0 epid-linked, 0 clinically compatible), 1 (9.86%) were discarded & 131 (88.73%) were pending
  - A total of 71 LGAs across 19 States reported at least one suspected case
  - Zero (0) deaths were recorded from confirmed cases
- **From January – December 2025:**
  - Borno (7,971), Zamfara (4,779), Yobe (2,076), Bauchi (1,574), and Kebbi (1,357) accounted for 64.74% of the 27,433 suspected cases reported
  - Of the suspected cases reported, 19,225 (70.08%) were confirmed (2,803 lab-confirmed, 2,013 epi-linked, and 14,409 clinically compatible), 6,466 (23.57%) were discarded, and 1,742 (6.35%) were pending classification
  - The age group 9-59 months accounted for 9,410 (48.95%) of all confirmed cases
  - A total of 153 deaths (CFR = 0.8%) were recorded among confirmed cases
  - Up to 14,813 (77.05%) of the 19,225 confirmed cases did not receive any dose of measles vaccine (“zero doses”)
- **Measles outbreaks as at December 31<sup>st</sup> 2025:**
  - From January to December 2025, a total of 188 LGAs across 27 States have recorded a measles outbreak
  - In December, no LGA has ongoing measles outbreak
  - Likewise, there is no LGA with new outbreak in December
  - Lastly, all 188 LGAs across 27 states have ended their outbreaks as at end of December 2025.



**Figure 1: Map showing the measles outbreak status in Nigeria: December 2025**



**Figure 2: Map showing the Annualized measles Incidence in Nigeria: 2025**

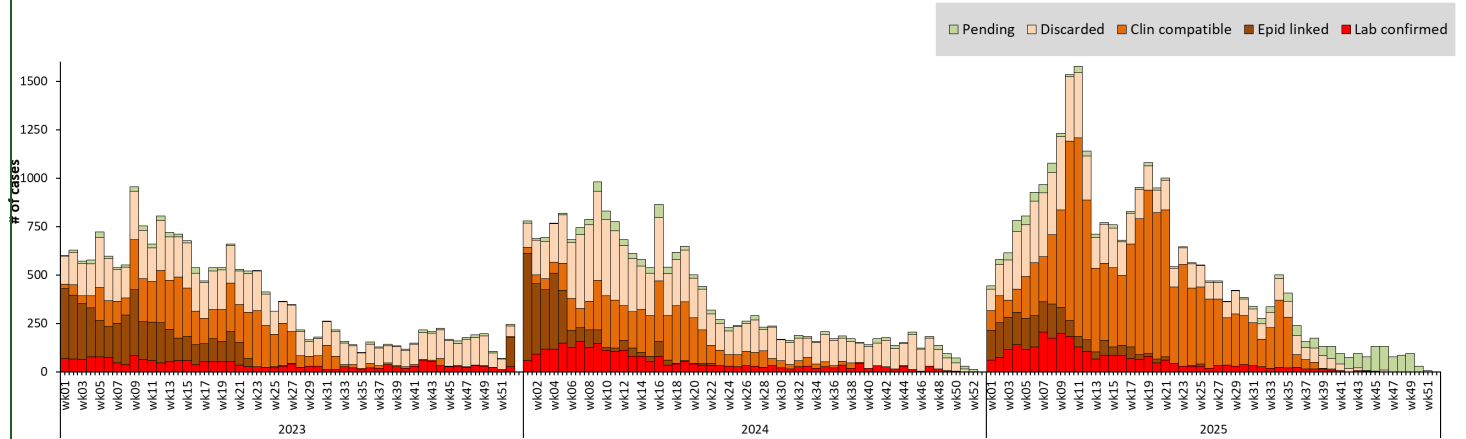


Figure 3: Epi-curve of confirmed measles cases in Nigeria, 2023 – 2025 (December)

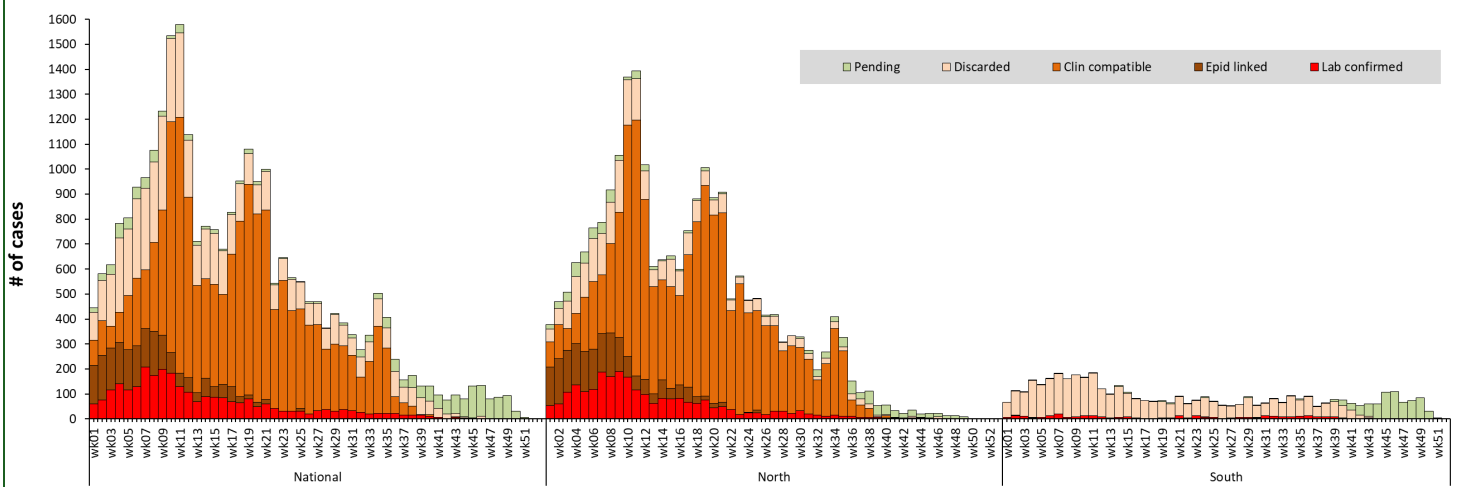


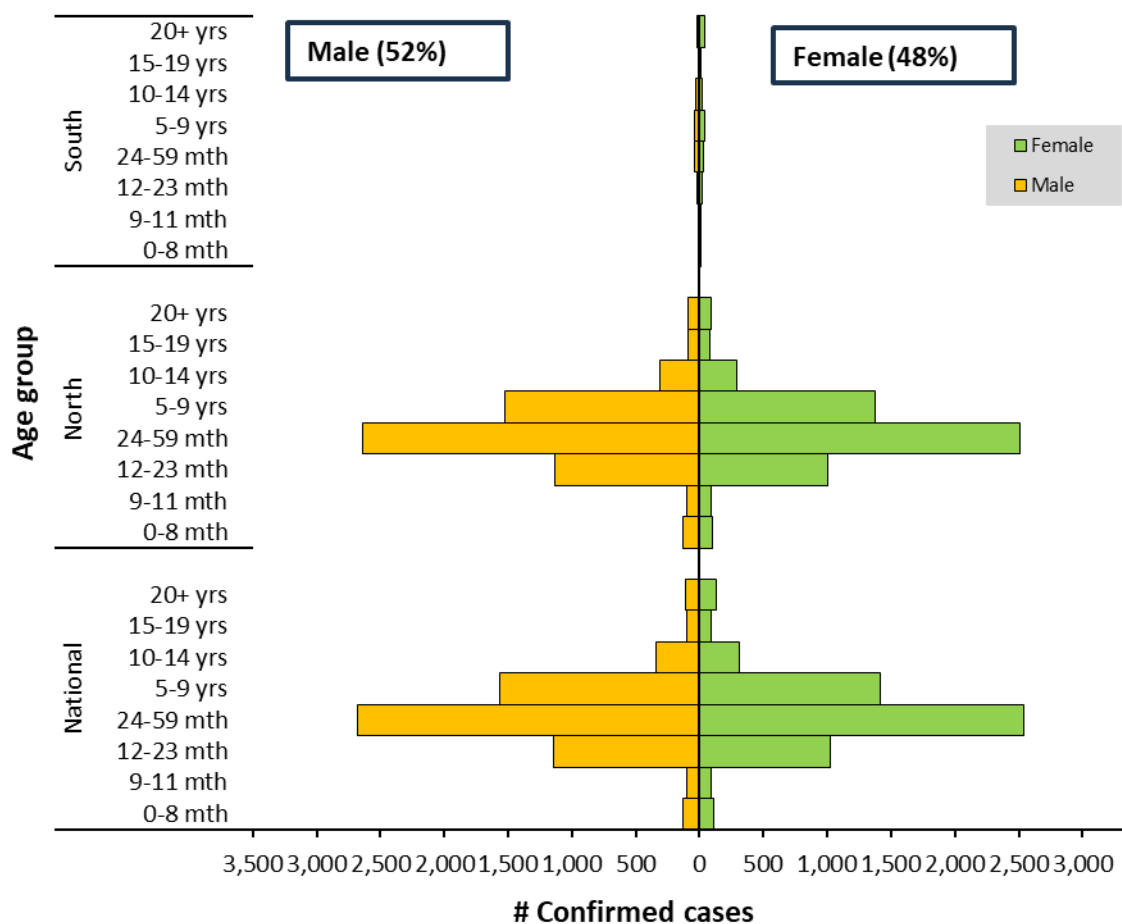
Figure 4: Epi-curve of measles cases in Nigeria (Northern vs Southern zone), Jan - Dec, 2025

**Table 2: Distribution of key measles surveillance variables by states, December 2025**

States	# Suspected cases	# Confirmed cases (%)	Classification of confirmed cases			% of confirmed cases aged 9-59 months	% of confirmed cases that are "zero doses"
			Lab. confirmed	Epid. linked	Clin. Compatible		
<b>NORTH</b>	<b>22,846</b>	<b>18890 (83%)</b>	<b>2,479</b>	<b>2013</b>	<b>14398</b>	<b>67.4%</b>	<b>78.2%</b>
Adamawa	500	310 (62%)	202	41	67	44.3%	100.0%
Bauchi	1,575	1402 (89%)	153	542	707	54.3%	91.2%
Benue	172	47 (27%)	47	0	0	44.7%	100.0%
Borno	7,971	7865 (99%)	71	184	7610	79.3%	84.6%
FCT, Abuja	51	12 (24%)	11	0	1	33.3%	100.0%
Gombe	432	236 (55%)	172	14	50	47.7%	86.4%
Jigawa	973	347 (36%)	302	13	32	49.0%	62.2%
Kaduna	353	139 (39%)	139	0	0	64.7%	36.7%
Kano	238	53 (22%)	53	0	0	69.8%	67.9%
Katsina	818	389 (48%)	389	0	0	47.8%	65.3%
Kebbi	1,359	1064 (78%)	128	335	601	51.8%	87.6%
Kogi	197	55 (28%)	55	0	0	54.5%	92.7%
Kwara	322	105 (33%)	104	0	1	42.7%	98.1%
Nasarawa	137	44 (32%)	43	0	1	45.5%	70.5%
Niger	175	39 (22%)	38	0	1	53.8%	100.0%
Plateau	343	106 (31%)	105	0	1	33.3%	93.4%
Sokoto	184	114 (62%)	114	0	0	63.7%	27.2%
Taraba	191	112 (59%)	112	0	0	42.0%	79.5%
Yobe	2,076	1772 (85%)	181	379	1212	58.8%	12.2%
Zamfara	4,779	4679 (98%)	60	505	4114	76.7%	88.0%
<b>SOUTH</b>	<b>4,587</b>	<b>335 (7%)</b>	<b>324</b>	<b>0</b>	<b>11</b>	<b>36.0%</b>	<b>12.5%</b>
Abia	375	27 (7%)	26	0	1	43.5%	51.9%
Akwa Ibom	433	54 (12%)	54	0	0	31.5%	1.9%
Anambra	205	6 (3%)	6	0	0	66.7%	33.3%
Bayelsa	134	15 (11%)	8	0	7	86.7%	0.0%
Cross River	187	25 (13%)	25	0	0	40.0%	0.0%
Delta	209	7 (3%)	7	0	0	28.6%	0.0%
Ebonyi	73	2 (3%)	2	0	0	0.0%	100.0%
Edo	162	16 (10%)	16	0	0	56.3%	0.0%
Ekiti	320	3 (1%)	3	0	0	66.7%	0.0%
Enugu	328	26 (8%)	24	0	2	25.0%	73.1%
Imo	212	10 (5%)	9	0	1	16.7%	40.0%
Lagos	351	9 (3%)	9	0	0	44.4%	0.0%
Ogun	429	32 (7%)	32	0	0	25.0%	0.0%
Ondo	352	23 (7%)	23	0	0	30.4%	0.0%
Osun	280	23 (8%)	23	0	0	26.1%	0.0%
Oyo	344	36 (10%)	36	0	0	38.9%	0.0%
Rivers	193	21 (11%)	21	0	0	23.8%	0.0%
<b>TOTAL</b>	<b>27,433</b>	<b>19,225 (70%)</b>	<b>2,803</b>	<b>2013</b>	<b>14,409</b>	<b>66.7%</b>	<b>77.1%</b>

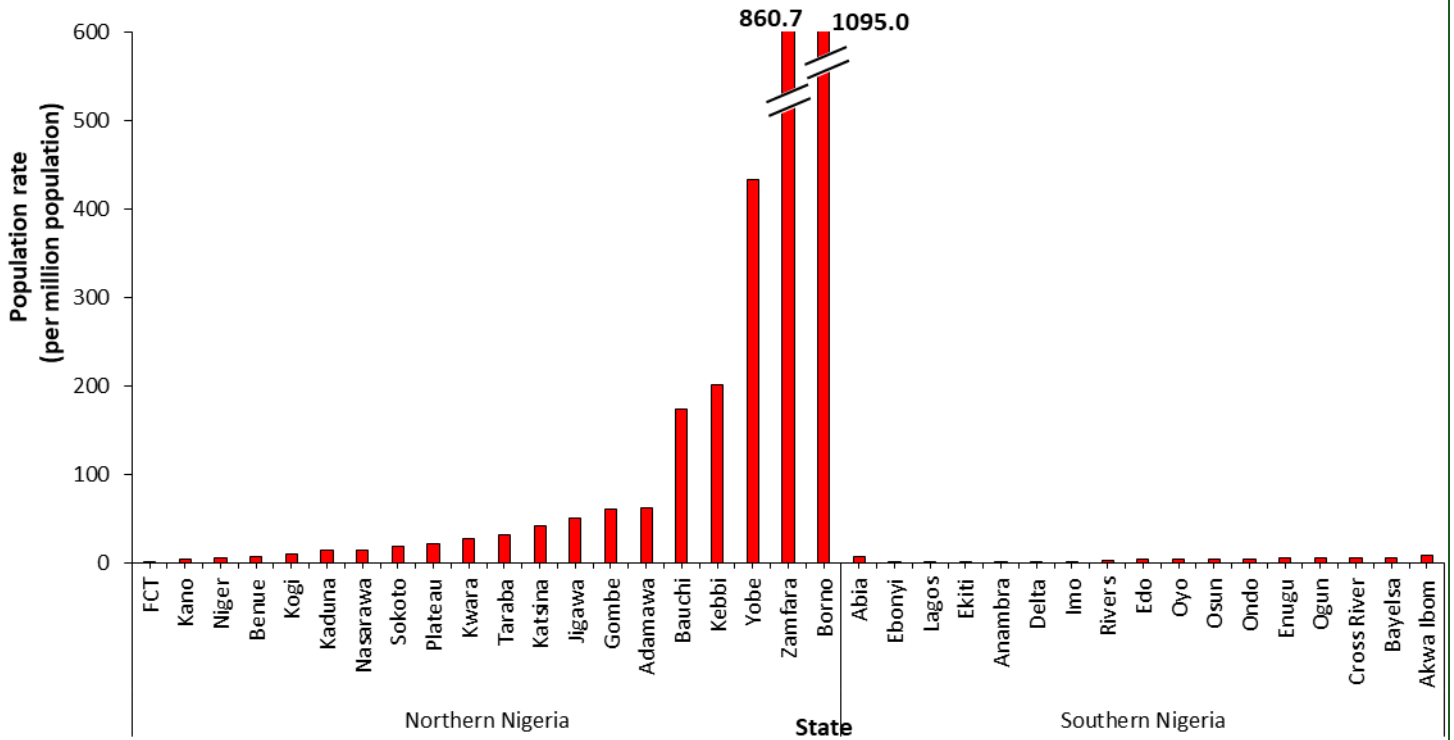
**Table 3: Trend of measles surveillance performance indicators, Jan – December, 2021 – 2025**

Surveillance Performance Indicator	Target	2021 (Dec)	2022 (Dec)	2023 (Dec)	2024 (Dec)	2025 (Dec)
Annualized Measles Incidence	< 1/million population	51.6	104.1	54.9	43.2	81.9
Annualized non-measles febrile rash illness (NMFRI) rate	≥ 2/100,000 population	2.8	4.1	3.6	4.0	2.7
Proportion of reported measles cases from whom blood specimen was collected	≥ 80%	52.0%	49.4%	61.1%	73.3%	42.6%
Proportion of LGAs that reported at least 1 measles case with blood specimen collected	≥ 80%	100.0%	100.0%	100.0%	100.0%	100.0%
Annualized rate of investigation (with blood specimens) of suspected measles cases	> 1/100,000 population	4.0	7.2	4.5	5.7	4.6
Proportion of lab-confirmed measles cases	< 10%	26.1%	35.9%	21.1%	22.3%	30.3%
Proportion of serum specimens arriving at measles laboratory in good condition	≥ 90%	97.4%	99.6%	98.5%	99.9%	97.4%

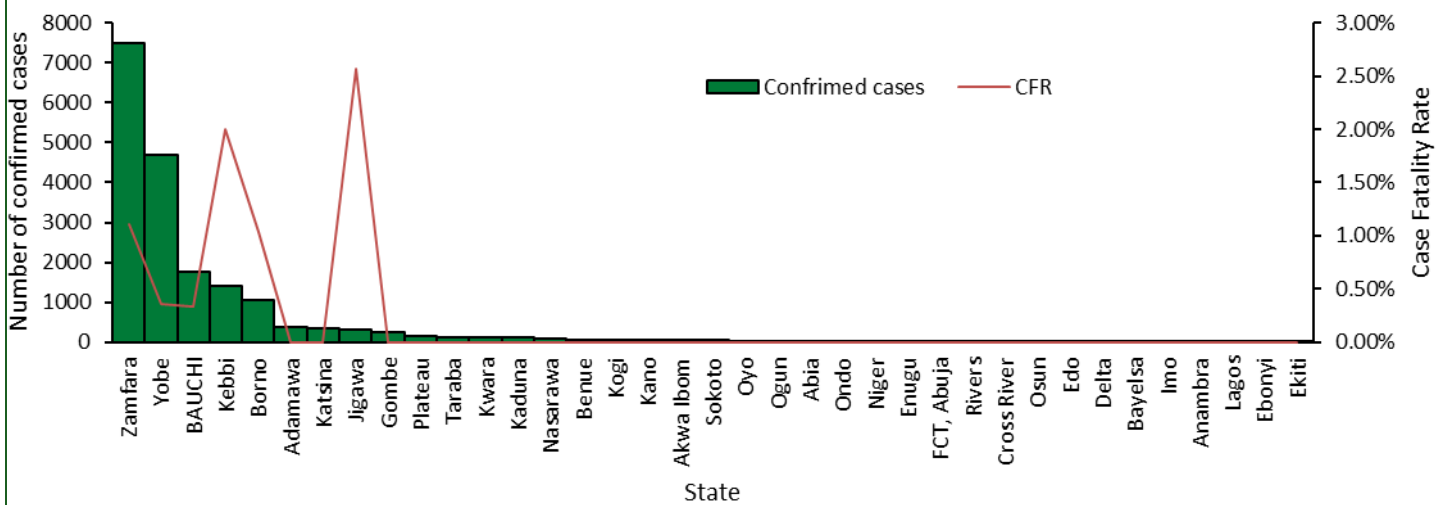


**Figure 5: Age-sex distribution of confirmed measles cases in Nigeria (Northern and Southern zones), Jan - Dec, 2025**

*A combined visual showing both the number of confirmed cases and the CFR per state, enabling identification of areas with high disease burden and mortality*



**Figure 6: Incidence of confirmed measles cases in Nigeria (North and South), Jan - Dec, 2025**



**Figure 7. Confirmed cases and the corresponding Case Fatality Rate (CFR) by state, Jan – Dec, 2025**

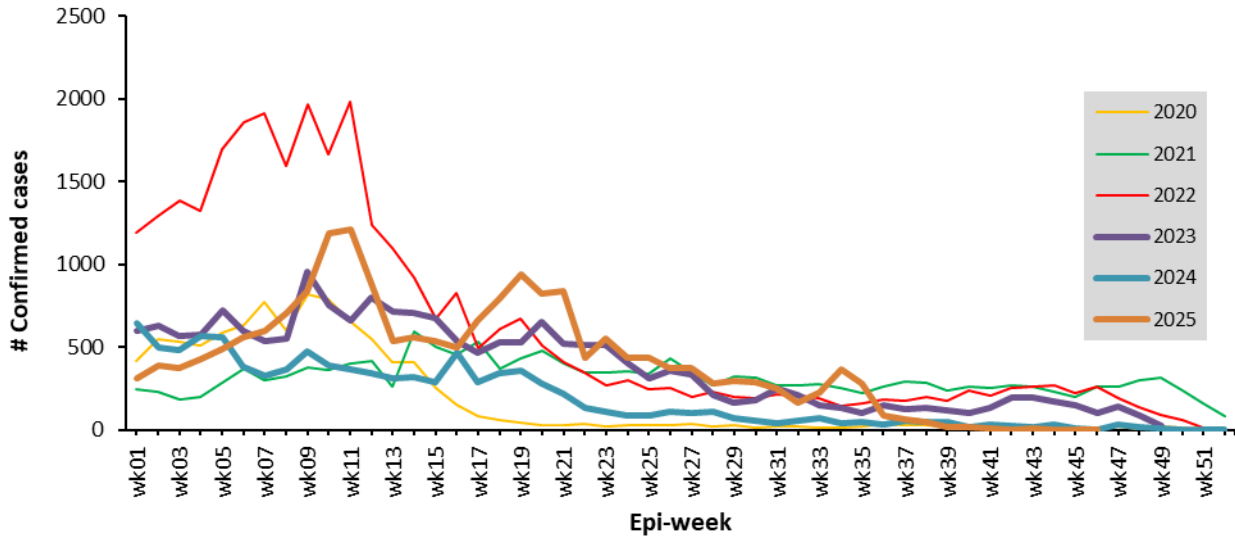


Figure 8: Trend of confirmed measles cases in Nigeria, 2020 – 2025 (epi-week 01 – 52).

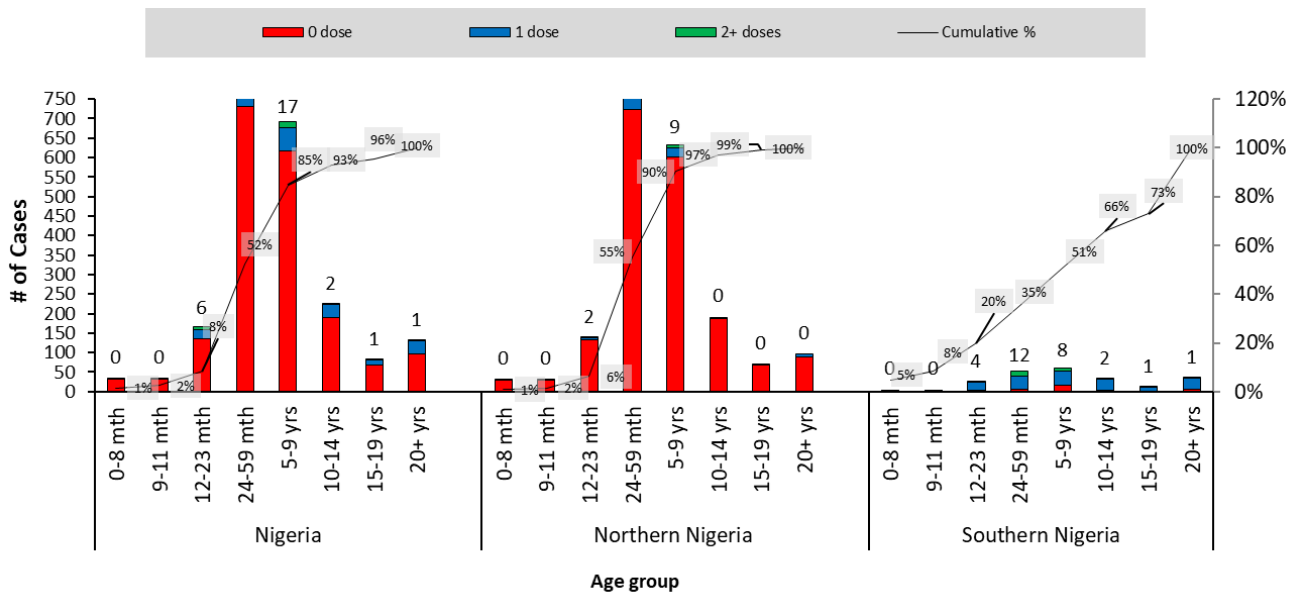


Figure 9: Vaccination status and age distribution lab confirmed measles cases in Nigeria (Northern vs Southern zone), Jan – December, 2025

# Situation Report

November 2025

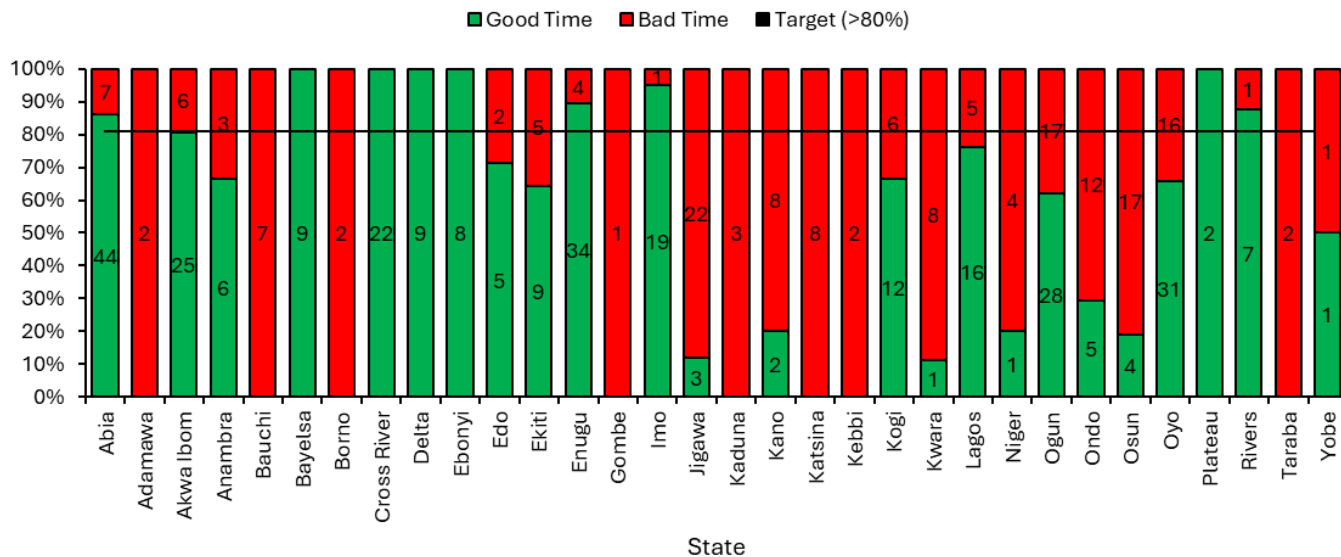


Figure 10: Proportion of measles samples reaching the laboratory in good time, Dec 2025

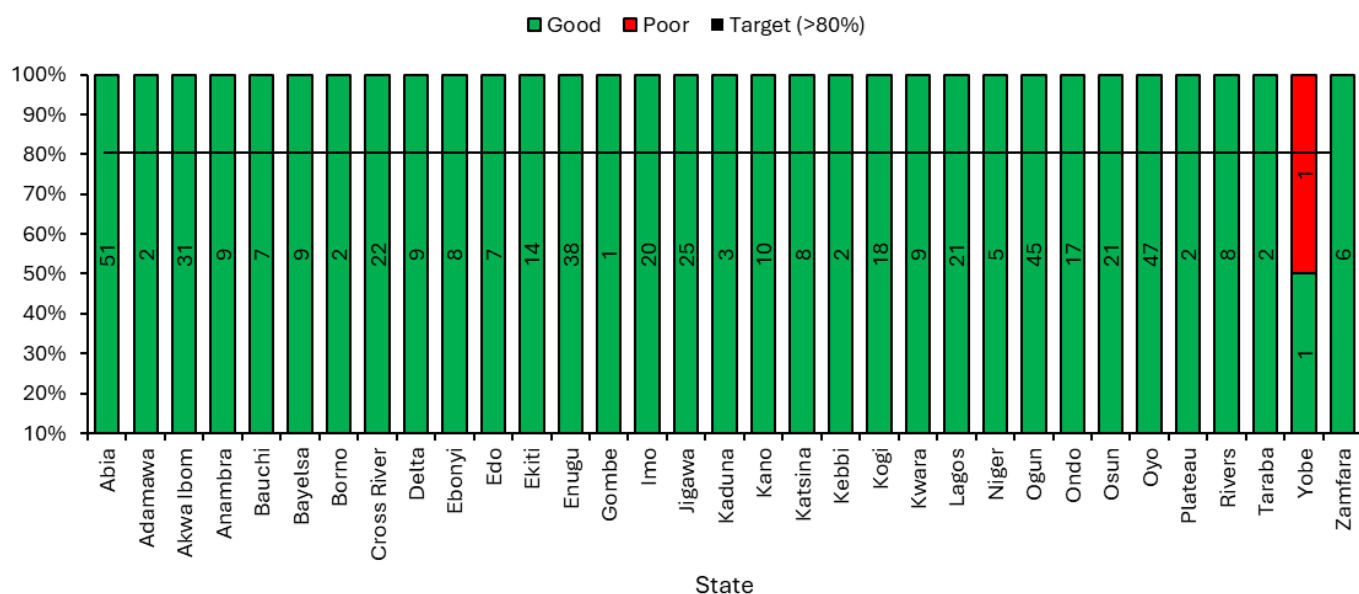
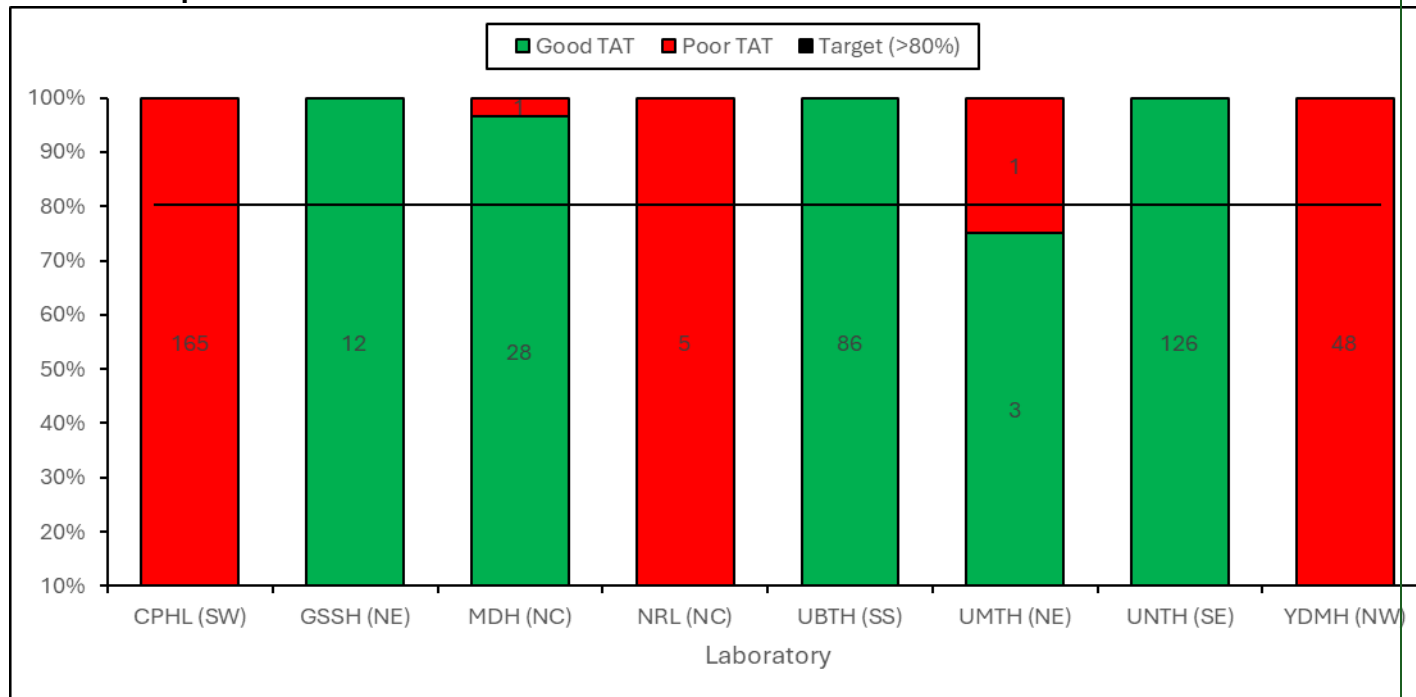


Figure 11: Proportion of measles samples getting to the lab in good condition, December 2025



**Figure 12: Proportion of measles samples with good turnaround time, December 2025**

**QUICK REFERENCE**

Nigeria Centre for Disease Control and Prevention: [www.ncdc.gov.ng](http://www.ncdc.gov.ng)

*Disclaimer – This situation report is based on the best available information reported. The NCDC is not responsible for information shared with third parties or any interpretation outside what is published.*