



Measles Situation Report

July 2025

Key Points

Table 1: Summary of the current week, cumulative Epi week, current year and comparison with the previous year

Reporting Period	Suspected cases	Confirmed cases	Deaths (Confirmed cases)	Case Fatality Ratio (CFR)	States and LGAs affected (Confirmed cases)
July 2025	229	57	0	0.0%	State(s): 17 LGA(s): 26
Jan to Jul 2025	16,106	10,783	76	0.7%	State(s): 36 + FCT LGA(s): 481
Jan. to Jul 2024	16,884	9,170	73	0.8%	State(s): 36 + FCT LGA(s): 495

Highlights (key summary)

In July 2025:

- Jigawa (28), Ondo (21), Zamfara (20), Abia (20), Lagos (18), and Enugu (14) accounted for 52.8% of the 229 suspected cases reported
- Of the suspected cases reported, 57 (24.9%) were confirmed (33 lab-confirmed & 0 epidemiologically linked, 24 clinically compatible), 138 (160.4%) were discarded & 38 (14.9%) were pending
- A total of 26 LGAs across 17 States reported at least one suspected case
- Zero (0) deaths were recorded from confirmed cases

From January – July 2025:

- Zamfara (4,764), Yobe (2,053), Bauchi (1,400), Kebbi (1086), and Jigawa (562) accounted for 61.3% of the 16,106 suspected cases reported
- Of the suspected cases reported, 10,783 (66.95%) were confirmed (1,960 lab-confirmed, 1,732 epi-linked, and 7,091 clinically compatible), 4,710 (29.2%) were discarded, and 613 (3.81%) were pending classification
- The age group 9 - 59 months accounted for 5,882 (36.5%) of all confirmed cases
- A total of 76 deaths (CFR = 0.7%) were recorded among confirmed cases
- Up to 8,109 (75.2%) of the 10,783 confirmed cases did not receive any dose of measles vaccine (“zero doses”)

Measles outbreaks as at July 31st 2025:

- From January to July 2025, a total of 181 LGAs across 25 States have recorded a measles outbreak
- In July, 8 LGAs across 8 states (Benue, Borno, FCT, Jigawa, Kaduna, Kwara, Sokot, and Yobe) have ongoing measles outbreak.

Situation Report

Epi Week:

- A total of 6 LGAs across 5 states (Niger-2 and one in Adamawa, Gombe, Kaduan, and Kano) recorded new measles outbreak in July 2025.
- Lastly, 167 LGAs across 24 states have ended their outbreaks as at end of July 2025.

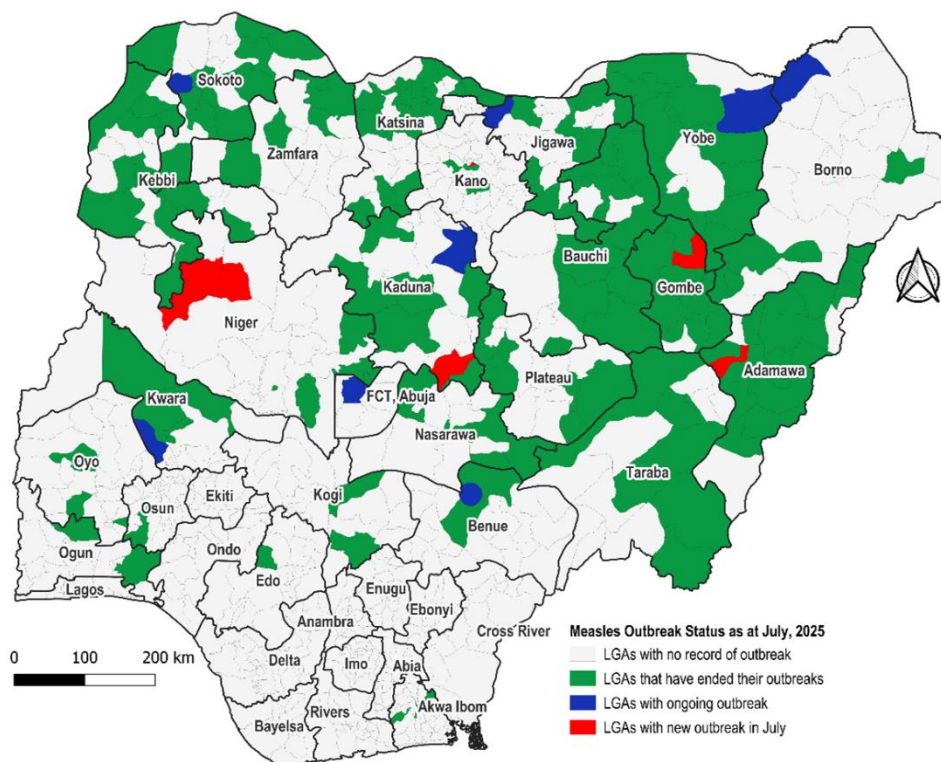


Figure 1: Map showing the measles outbreak status in Nigeria: July 2025

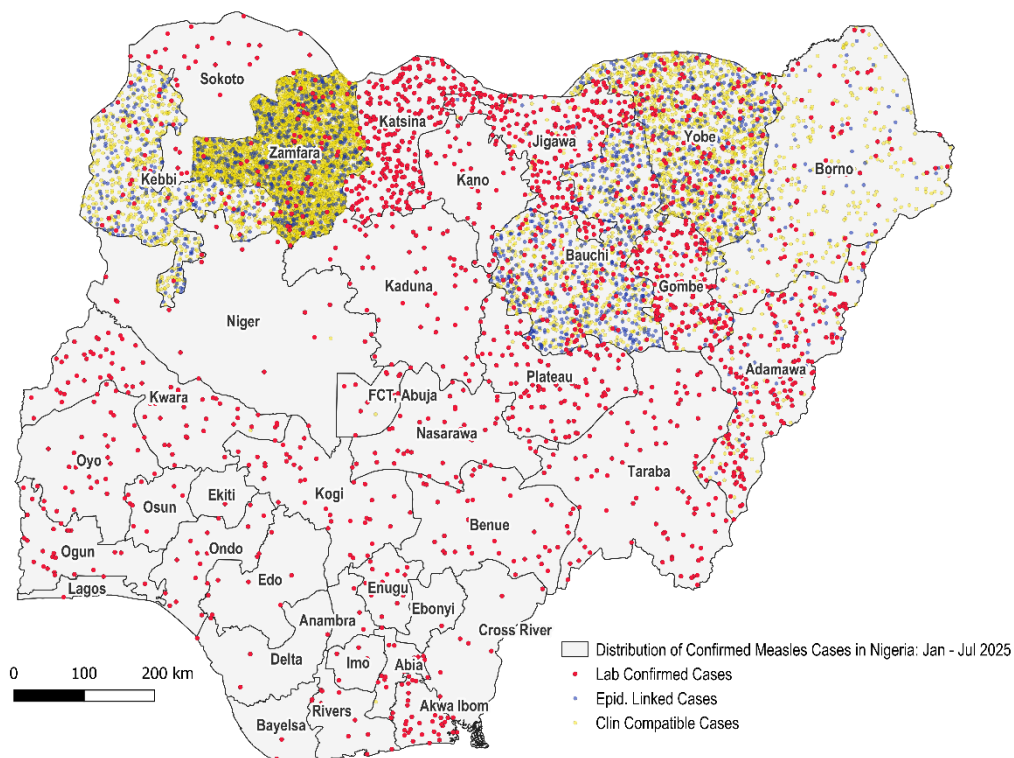


Figure 2: Map showing the distribution of confirmed measles in Nigeria: Jan-Jul 2025

Situation Report

Epi Week:

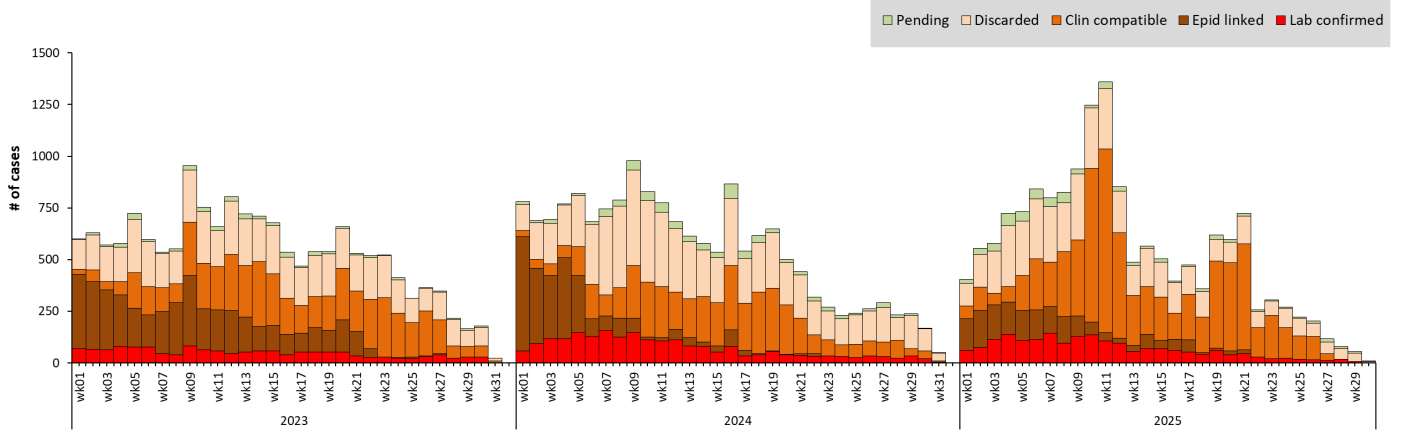


Figure 3: Epi-curve of confirmed measles cases in Nigeria, 2023 – 2025 (July)

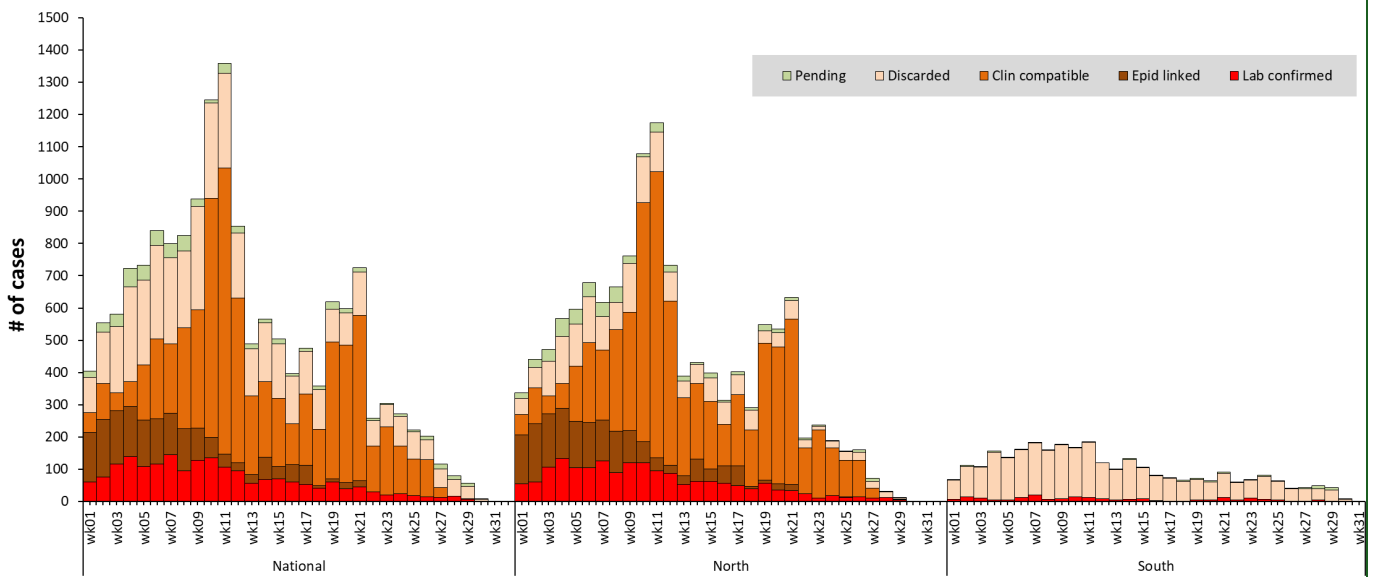


Figure 4: Epi-curve of measles cases in Nigeria (Northern vs Southern zone), Jan - July, 2025

Table 2: Distribution of key measles surveillance variables by states, July 2025

States	# Suspected cases	# Confirmed cases (%)	Classification of confirmed cases			% of confirmed cases aged 9-59 months	% of confirmed cases that are "zero doses"
			Lab. confirmed	Epid. linked	Clin. Compatible		
NORTH	13,123	10,580 (81%)	1,758	1732	7090	53.7%	76.3%
Adamawa	460	293 (64%)	179	46	68	43.9%	100.0%
Bauchi	1,400	1291 (92%)	139	506	646	53.8%	90.5%
Benue	143	39 (27%)	39	0	0	44.4%	100.0%
Borno	427	349 (82%)	66	44	239	55.6%	71.8%
FCT, Abuja	48	12 (25%)	11	0	1	33.3%	100.0%
Gombe	390	227 (58%)	162	14	51	48.0%	85.8%
Jigawa	562	241 (43%)	196	13	32	46.6%	88.5%
Kaduna	99	52 (53%)	52	0	0	57.7%	98.1%
Kano	156	38 (24%)	37	0	1	68.4%	97.4%
Katsina	534	251 (47%)	251	0	0	46.6%	97.6%
Kebbi	1,086	979 (90%)	43	238	698	52.5%	95.1%
Kogi	118	39 (33%)	39	0	0	53.8%	89.7%
Kwara	216	70 (32%)	69	0	1	48.5%	97.1%
Nasarawa	125	43 (34%)	43	0	0	43.6%	69.2%
Niger	69	16 (23%)	15	0	1	43.8%	100.0%
Plateau	297	94 (32%)	93	0	1	33.3%	92.6%
Sokoto	41	31 (76%)	31	0	0	96.8%	100.0%
Taraba	135	84 (62%)	84	0	0	38.1%	72.6%
Yobe	2,053	1756 (86%)	153	366	1237	59.1%	11.2%
Zamfara	4,764	4675 (98%)	56	505	4114	78.6%	88.0%
SOUTH	2,983	203 (7%)	202	0	1	30.7%	14.4%
Abia	199	19 (10%)	18	0	1	23.1%	60.0%
Akwa Ibom	319	33 (10%)	33	0	0	39.4%	3.0%
Anambra	134	3 (2%)	3	0	0	100.0%	50.0%
Bayelsa	87	4 (5%)	4	0	0	75.0%	0.0%
Cross River	126	10 (8%)	10	0	0	30.0%	0.0%
Delta	117	5 (4%)	5	0	0	20.0%	0.0%
Ebonyi	51	2 (4%)	2	0	0	0.0%	100.0%
Edo	95	9 (9%)	9	0	0	50.0%	0.0%
Ekiti	237	1 (0%)	1	0	0	#N/A	#N/A
Enugu	208	15 (7%)	15	0	0	13.3%	80.0%
Imo	134	4 (3%)	4	0	0	25.0%	75.0%
Lagos	244	3 (1%)	3	0	0	50.0%	0.0%
Ogun	292	26 (9%)	26	0	0	23.1%	0.0%
Ondo	242	18 (7%)	18	0	0	35.3%	0.0%
Osun	140	10 (7%)	10	0	0	20.0%	0.0%
Oyo	216	30 (14%)	30	0	0	33.3%	0.0%
Rivers	142	11 (8%)	11	0	0	18.2%	0.0%
TOTAL	16,106	10,783 (67%)	1,960	1732	7091	53.0%	75.1%

Table 3: Trend of measles surveillance performance indicators, Jan – July, 2021 – 2025

Surveillance Performance Indicator	Target	2021 (July)	2022 (July)	2023 (July)	2024 (July)	2025 (July)
Annualized Measles Incidence	< 1/million population	52.8	147.3	76.3	61.7	72.0
Annualized non-measles febrile rash illness (NMFRI) rate	≥ 2/100,000 population	2.3	4.8	3.7	4.5	3.0
Proportion of reported measles cases from whom blood specimen was collected	≥ 80%	40.8%	43.3%	55.6%	65.6%	48.1%
Proportion of LGAs that reported at least 1 measles case with blood specimen collected	≥ 80%	99.0%	97.5%	98.5%	99.6%	91.5%
Annualized rate of investigation (with blood specimens) of suspected measles cases	> 1/100,000 population	2.8	8.3	4.8	6.2	4.6
Proportion of lab-confirmed measles cases	< 10%	25.0%	39.0%	21.5%	24.3%	29.5%
Proportion of serum specimens arriving at measles laboratory in good condition	≥ 90%	99.5%	98.9%	98.3%	99.7%	99.5%

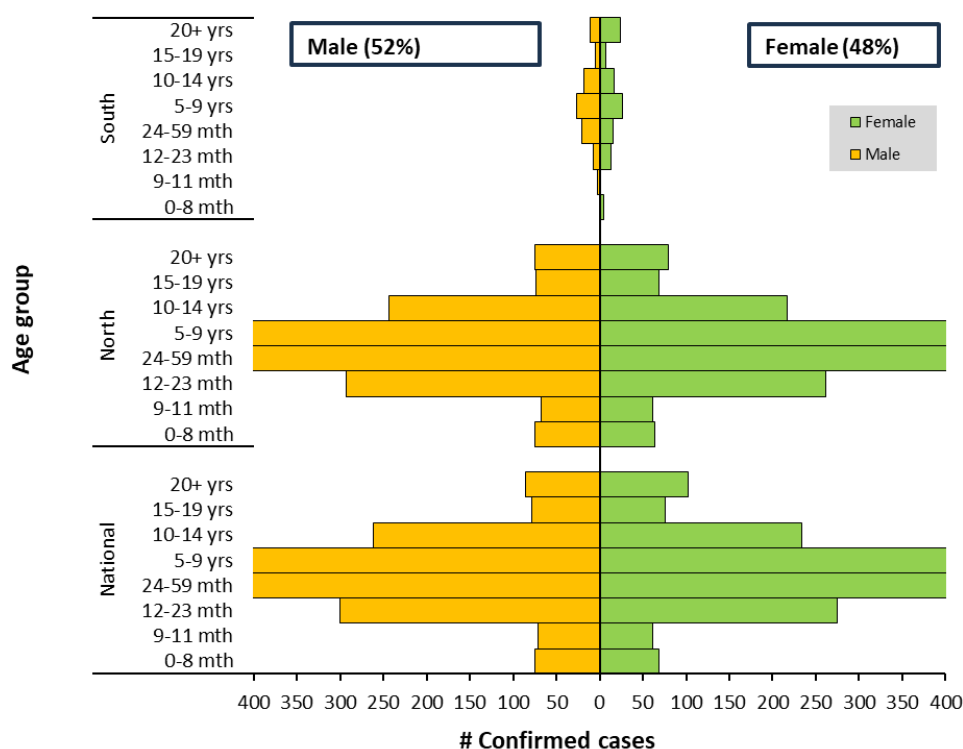


Figure 5: Age-sex distribution of confirmed measles cases in Nigeria (Northern and Southern zone), Jan - July, 2025

in Epiweek

A combined visual showing both the number of confirmed cases and the CFR per state, enabling identification of areas with high disease burden and mortality

Situation Report

Epi Week:

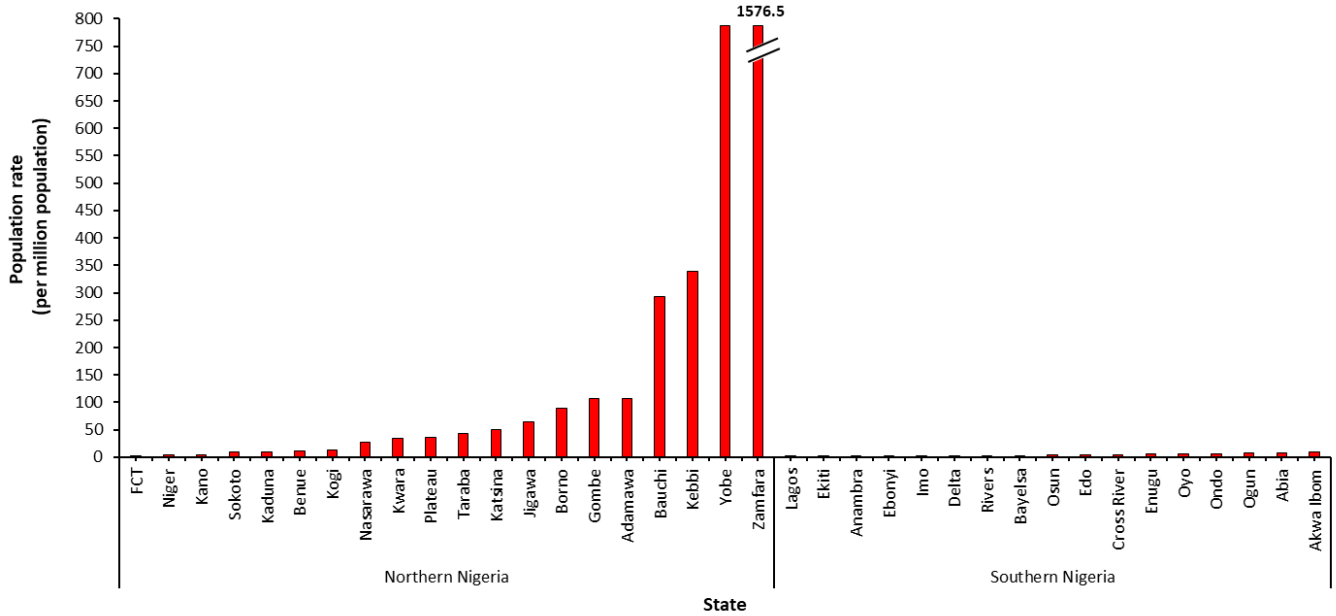


Figure 6: Incidence of confirmed measles cases in Nigeria (North and South), Jan - July, 2025

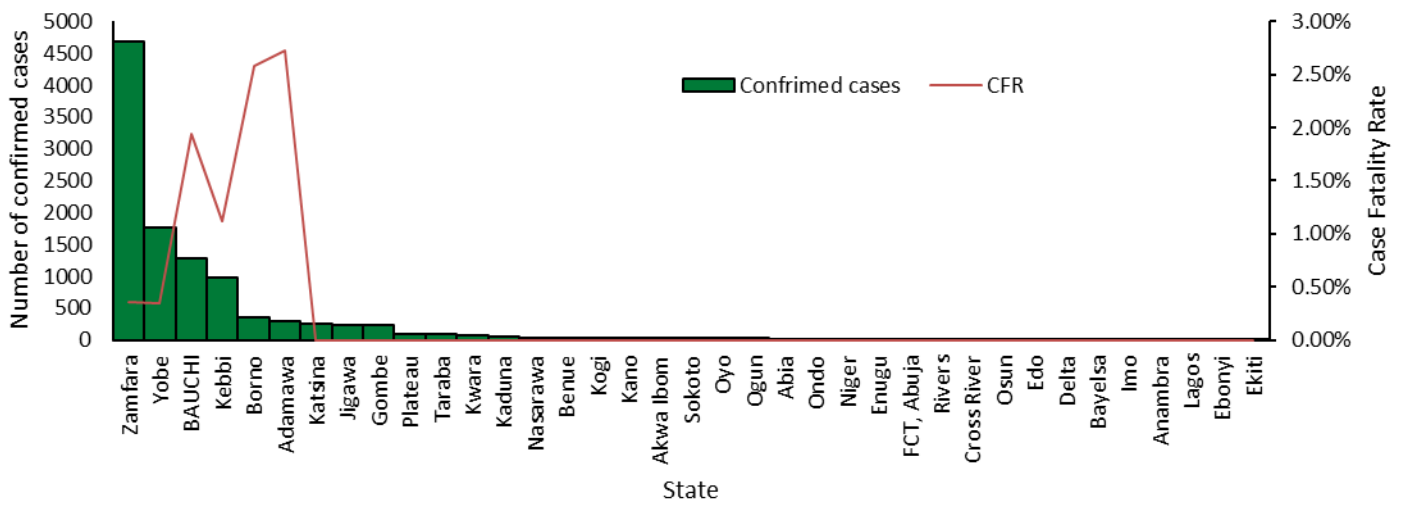


Figure 7. Confirmed cases and the corresponding Case Fatality Rate (CFR) by state, Jan – July, 2025

Situation Report

Epi Week:

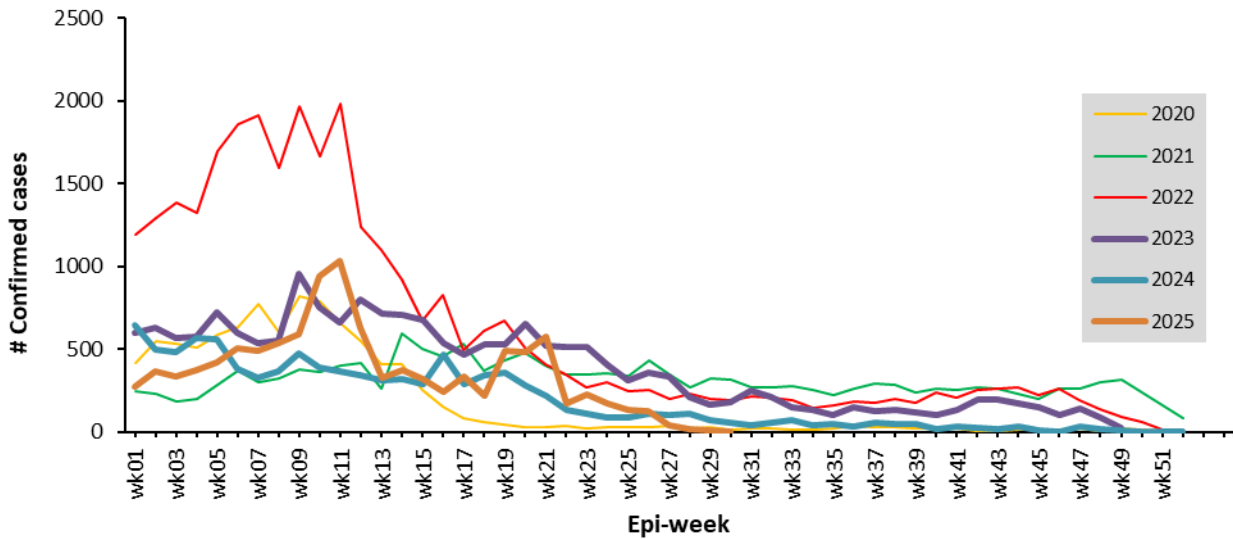


Figure 8: Trend of confirmed measles cases in Nigeria, 2020 – 2025 (epi-week 01 – 52).

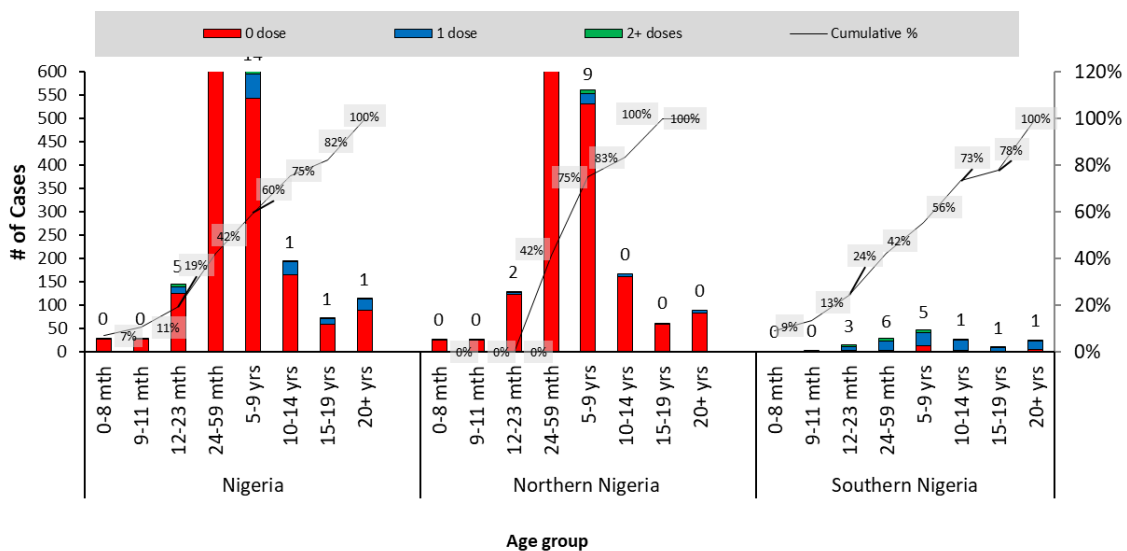


Figure 9: Vaccination status and age distribution lab confirmed measles cases in Nigeria (Northern vs Southern zone), Jan - July, 2025

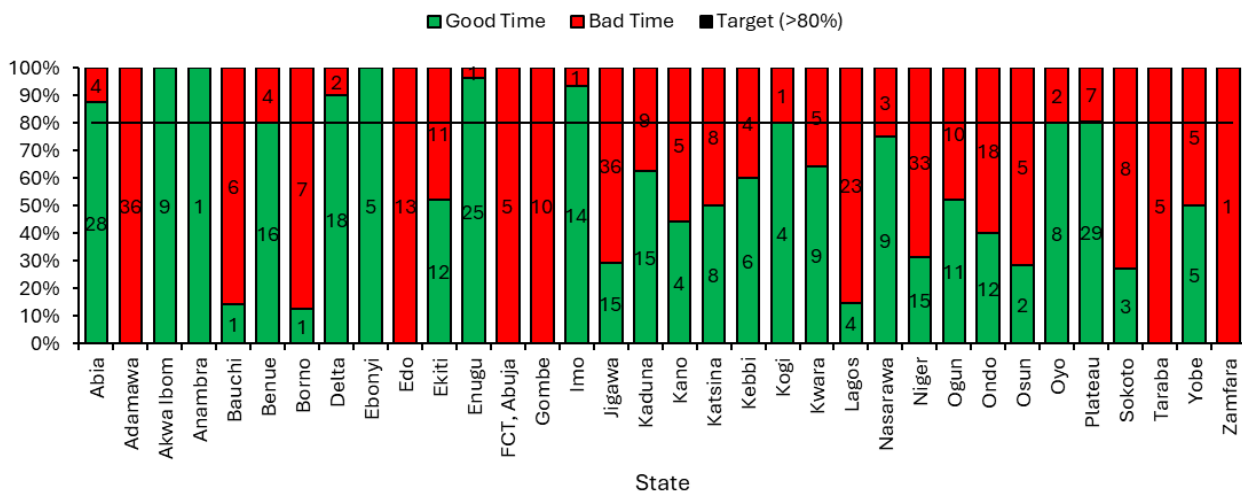


Figure 10: Proportion of measles samples reaching the laboratory in good time, July 2025

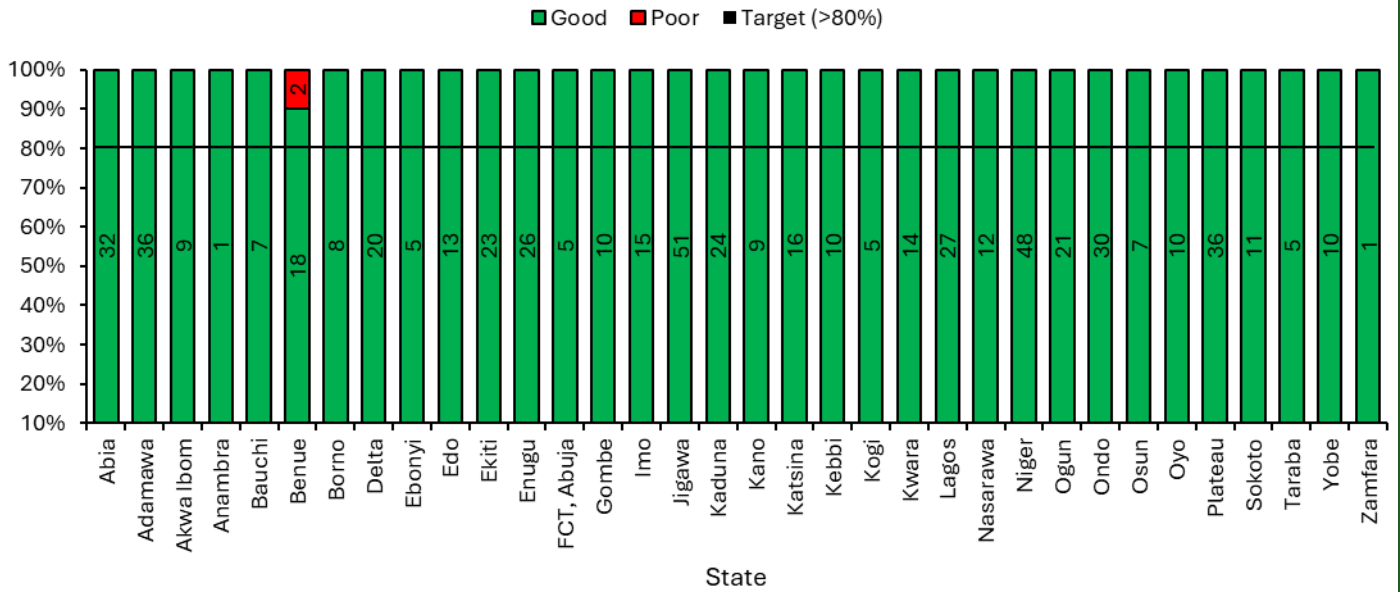


Figure 11: Proportion of measles samples getting to the lab in good condition, July 2025

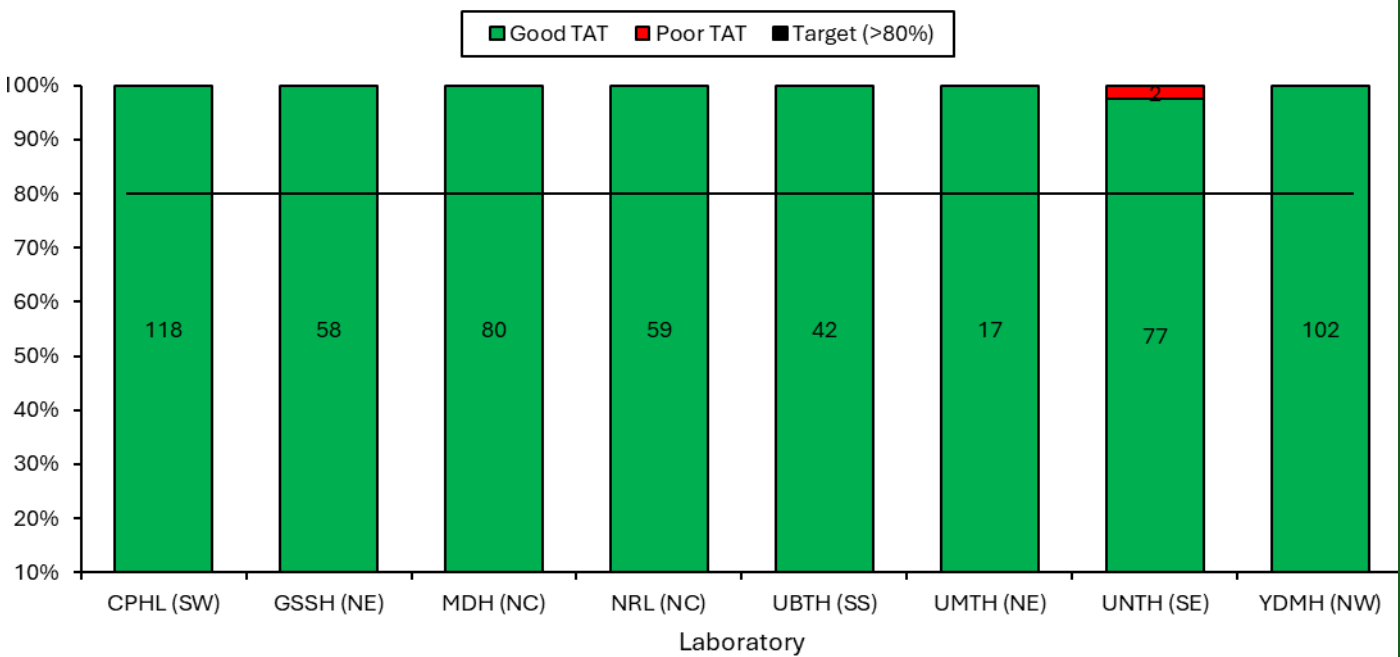


Figure 12: Proportion of measles samples with good turnaround time, July 2025