



Measles Situation Report

January 2026

Key Points

Table 1: Summary of the current month, cumulative Epi month, current year, and comparison with the previous year

Reporting Period	Suspected cases	Confirmed cases	Deaths (Confirmed cases)	Case Fatality Ratio (CFR)	States and LGAs affected (Confirmed cases)
January 2026	449	59	0	0.0%	State(s): 9 LGA(s): 21
January 2025	1,667	458	0	0.0%	State(s): 32 + FCT LGA(s): 174

Highlights (key summary)

In January, 2026:

- Katsina (41), Akwa Ibom (33), Oyo (28), and Ogun (25), accounted for 30.31% of the 449 suspected cases reported
- Of the suspected cases reported, 59 (13.1%) were confirmed as measles IgM positive, 49 (10.1%) were discarded, 6 (1.3%) were indeterminate, 30(6.7%) were not done, while 275 (61.2%) were pending
- A total of 188 LGAs across 36 States and FCT reported at least one suspected cases

Comparing January, 2025 to January, 2026:

- In January 2025, a total of 1,667 cases were reported while in January 2026, 449 suspected cases were reported.
- Of the suspected cases reported in 2025, states that reported highest number of cases are; Katsina (178), Jigawa (166), Kebbi (99), and Akwa Ibom (75) while in 2026, Katsina (41), Akwa Ibom (33), Oyo (28), and Ogun (25) reported highest number of cases
- The age group 9 - 59 months accounted for over 43.23% of the IgM-positive cases in 2025 while it accounted for 28.81% in 2026.

Measles outbreaks as at January 31st 2026:

- In January 2026, 11 LGAs across 7 states recorded measles outbreak, with Taraba State (4) recording the highest number of LGAs with outbreaks followed by Yobe State with 2 LGAs.
- However, Damaturu LGA in Yobe State recorded the highest number of IgM+ measles cases (11) withing the 4-week period, followed by Billiri LGA in Gombe State with 8 IgM+ cases.

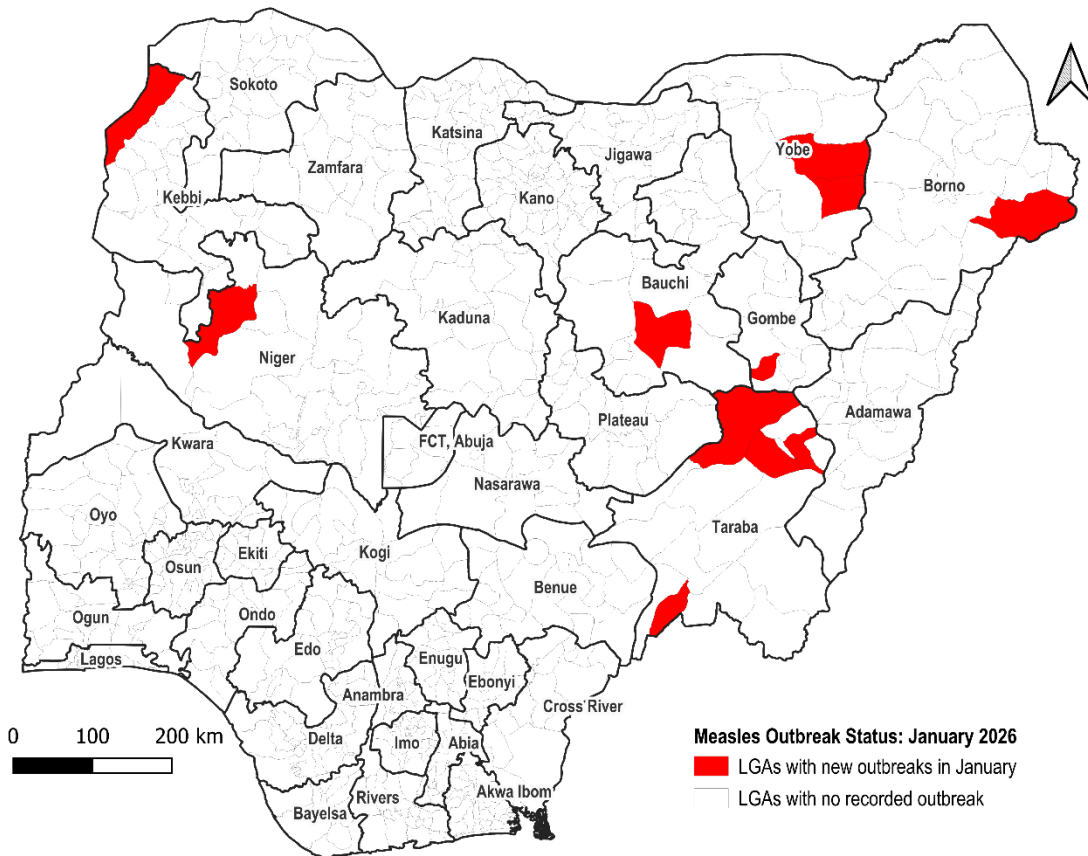


Figure 1: Map showing the measles outbreak status in Nigeria: January 2026

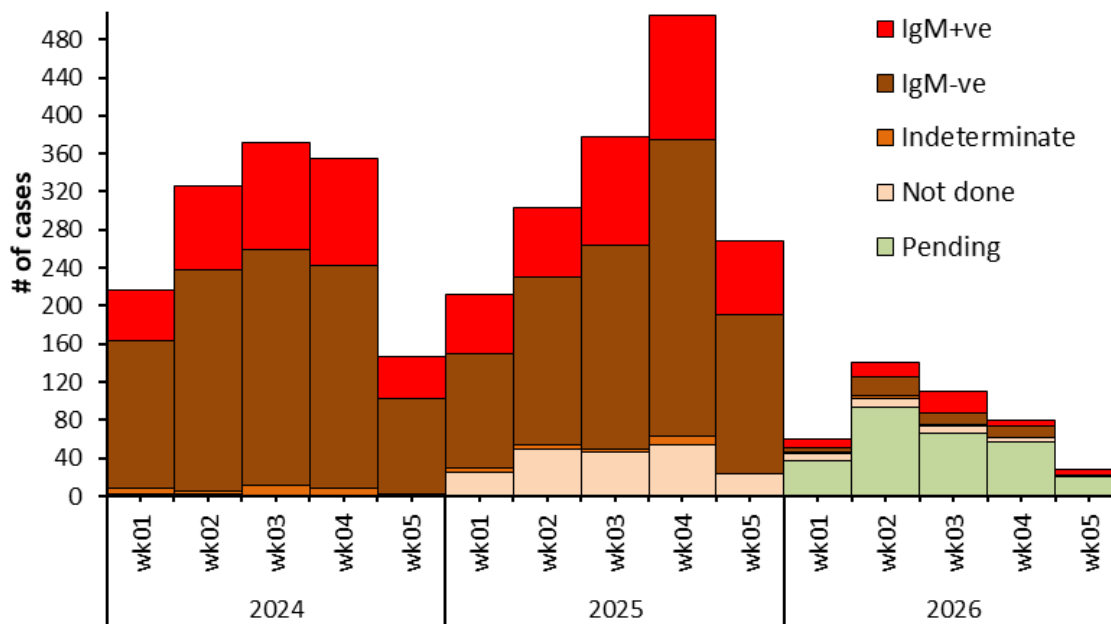


Figure 2: Epi-curve of measles cases in Nigeria, 2024 – 2026 (January)

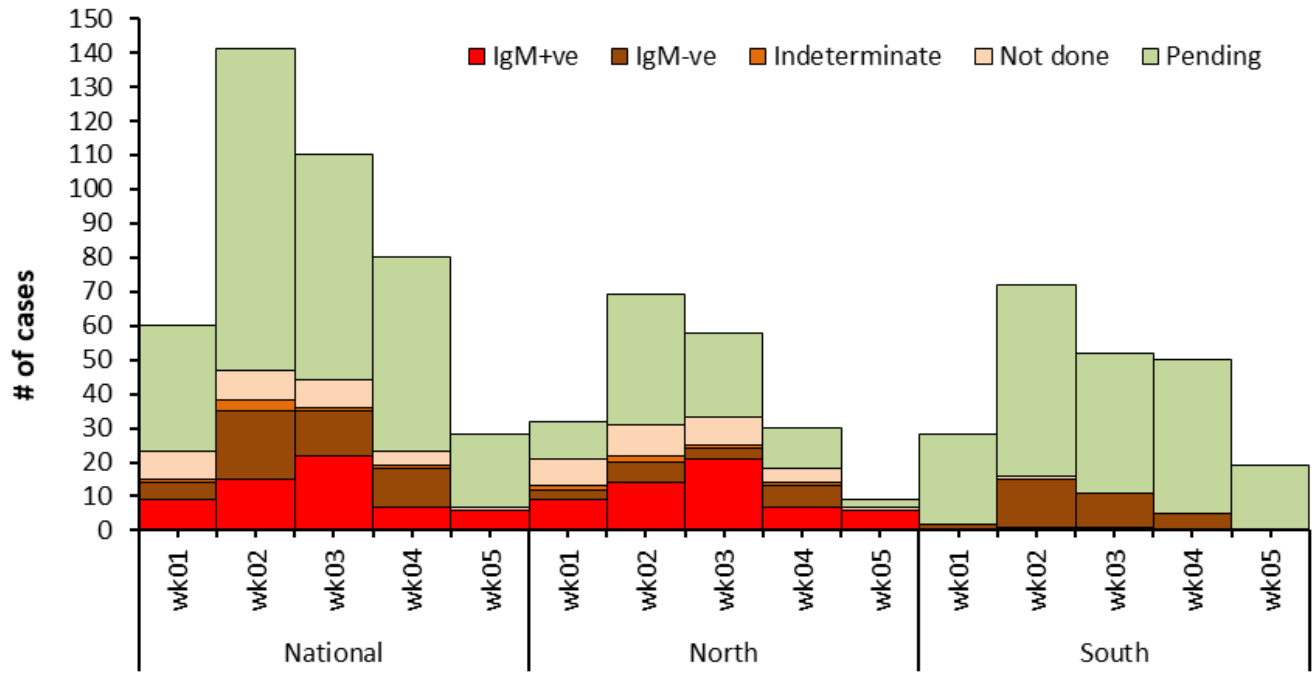


Figure 3: Epi-curve of measles cases in Nigeria (Northern vs Southern zone), Jan, 2026

Table 2: Distribution of key measles suspected cases and affected LGAs by states, January 2026

STATE	TOTAL CASES	IGM +VE CASES (%)	LGA WITH CASES	LGA WITH IGM+VE CASES
NORTH	215	57 (26.5%)	82	19
ADAMAWA	14	2 (14.3%)	6	2
BAUCHI	2	(0.0%)	1	0
BENUE	8	(0.0%)	4	0
BORNO	13	3 (23.1%)	5	2
FCT, ABUJA	1	(0.0%)	1	0
GOMBE	13	10 (76.9%)	4	3
JIGAWA	7	(0.0%)	4	0
KADUNA	9	(0.0%)	4	0
KANO	2	(0.0%)	1	0
KATSINA	41	(0.0%)	15	0
KEBBI	11	9 (81.8%)	3	3
KOGI	9	(0.0%)	6	0
KWARA	19	(0.0%)	7	0
NASARAWA	3	1 (33.3%)	2	1
NIGER	1	(0.0%)	1	0
PLATEAU	10	(0.0%)	3	0
SOKOTO	5	(0.0%)	2	0
TARABA	21	17 (81.0%)	8	6
YOBE	21	15 (71.4%)	3	2
ZAMFARA	5	(0.0%)	2	0
SOUTH	234	2 (0.9%)	106	2
ABIA	17	(0.0%)	1	0
AKWA IBOM	33	(0.0%)	12	0
ANAMBRA	10	1 (10.0%)	6	1
BAYELSA	2	(0.0%)	2	0
CROSS RIVER	11	(0.0%)	7	0
DELTA	14	(0.0%)	7	0
EBONYI	1	1 (100.0%)	1	1
EDO	10	(0.0%)	3	0
EKITI	20	(0.0%)	10	0
ENUGU	5	(0.0%)	3	0
IMO	5	(0.0%)	4	0
LAGOS	7	(0.0%)	4	0
OGUN	28	(0.0%)	12	0
ONDO	14	(0.0%)	6	0
OSUN	20	(0.0%)	12	0
OYO	31	(0.0%)	13	0
RIVERS	6	(0.0%)	3	0
GRAND TOTAL	449	59 (13.1%)	188	21

Table 3: Total IgM+ Cases recorded in States and LGAs with measles outbreak in January

State	LGA	Total Measles IgM+
Bauchi	Bauchi	4
Borno	Bama	3
Gombe	Billiri	8
Kebbi	Arewa Dandi	6
Niger	Magama	3
Taraba	Ardo-Kola	5
	Karim Lamido	4
	Ussa	3
	Yorro	3
Yobe	Damaturu	11
	Tarmuwa	4
Total	11	54

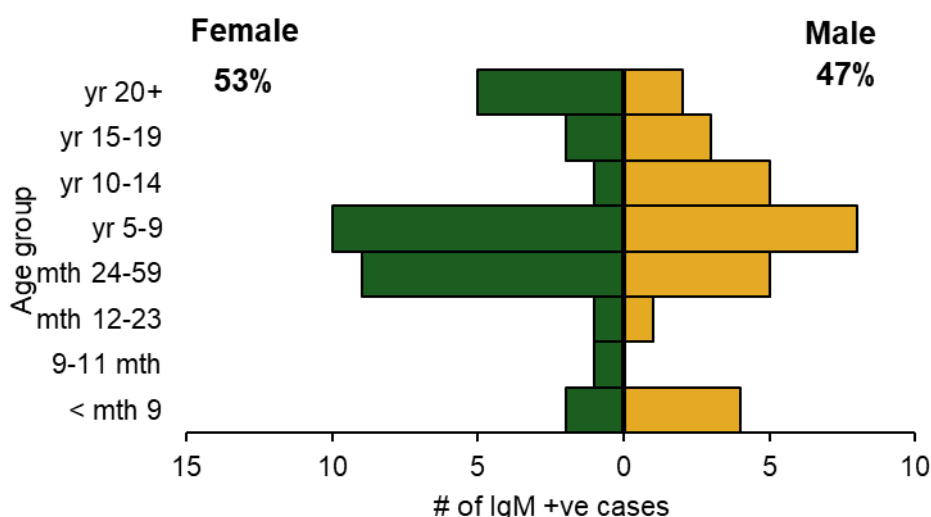


Figure 4: Age-sex distribution of IgM-positive measles cases in Nigeria, January, 2026

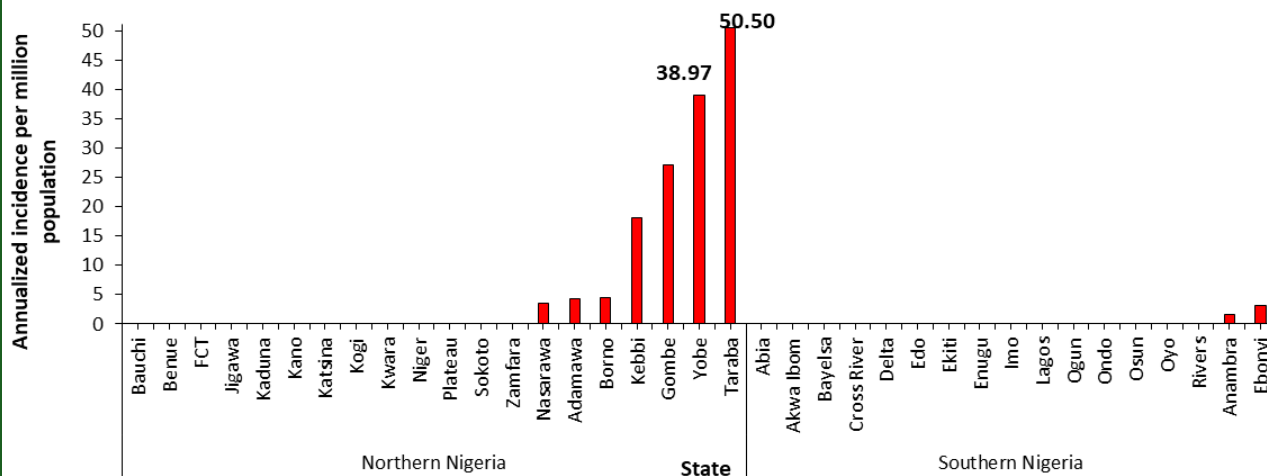


Figure 5: Incidence of IgM-positive measles cases in Nigeria (North and South), Jan, 2026

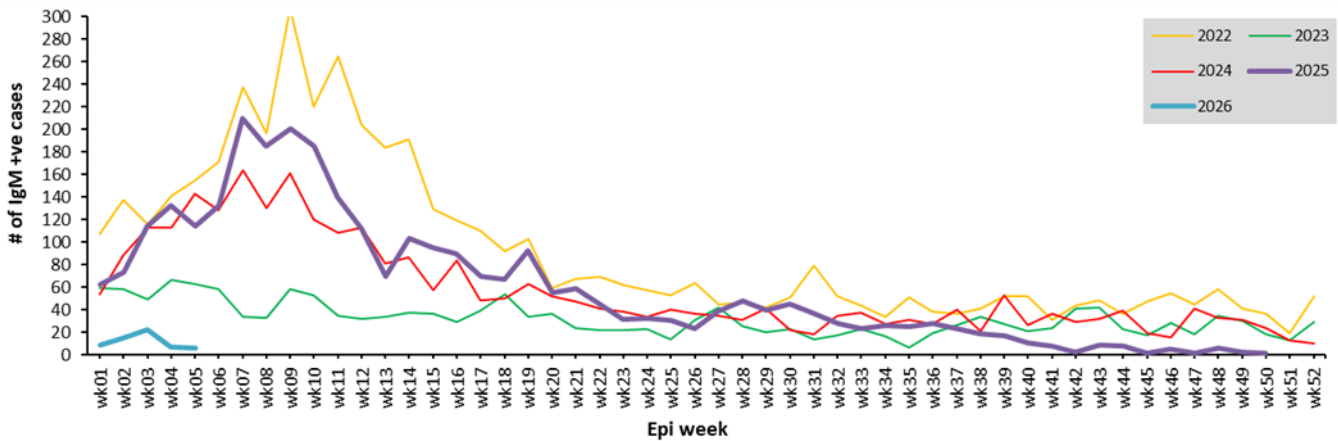


Figure 6: Trend of confirmed measles cases in Nigeria, 2020 – 2026 (epi-week 01 – 52).

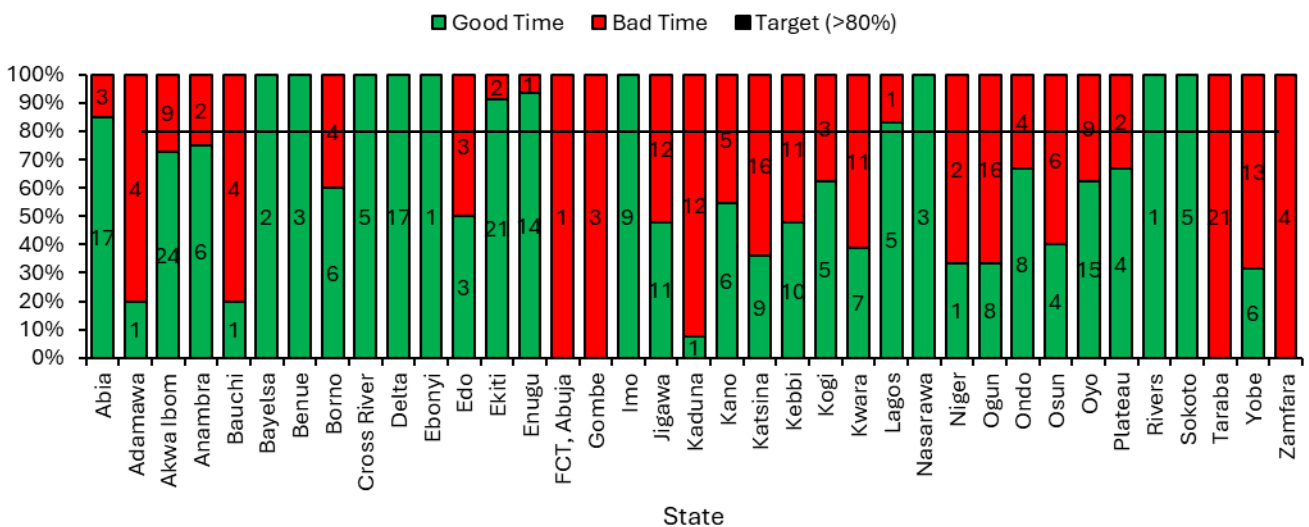


Figure 7: Proportion of measles samples reaching the laboratory in good time, January 2026

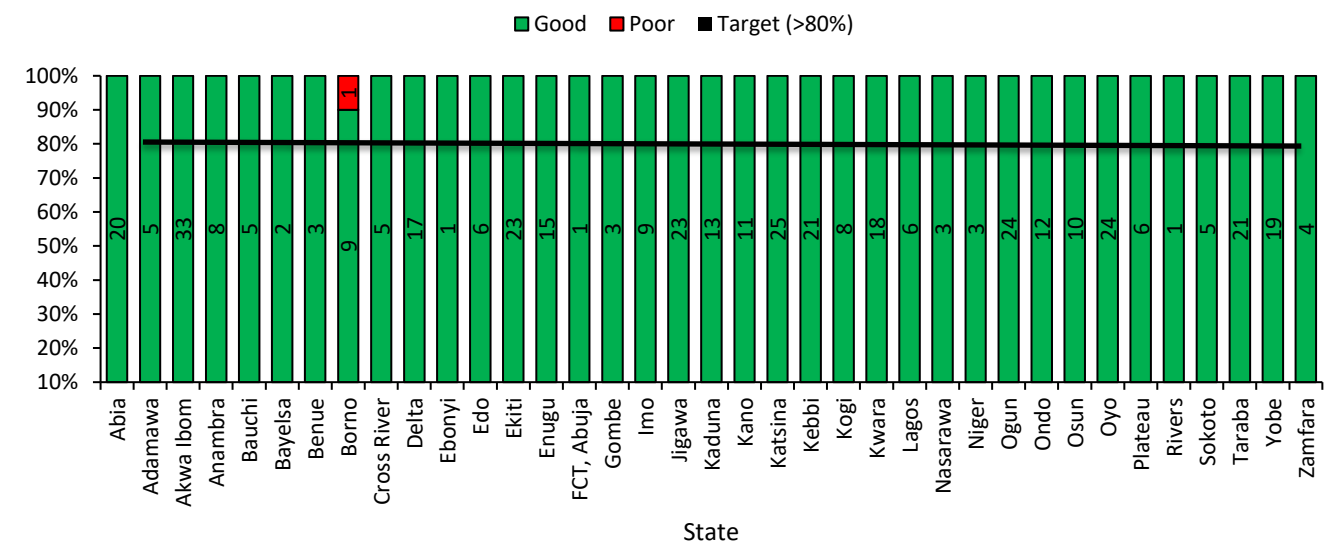


Figure 8: Proportion of measles samples getting to the lab in good condition, January 2026

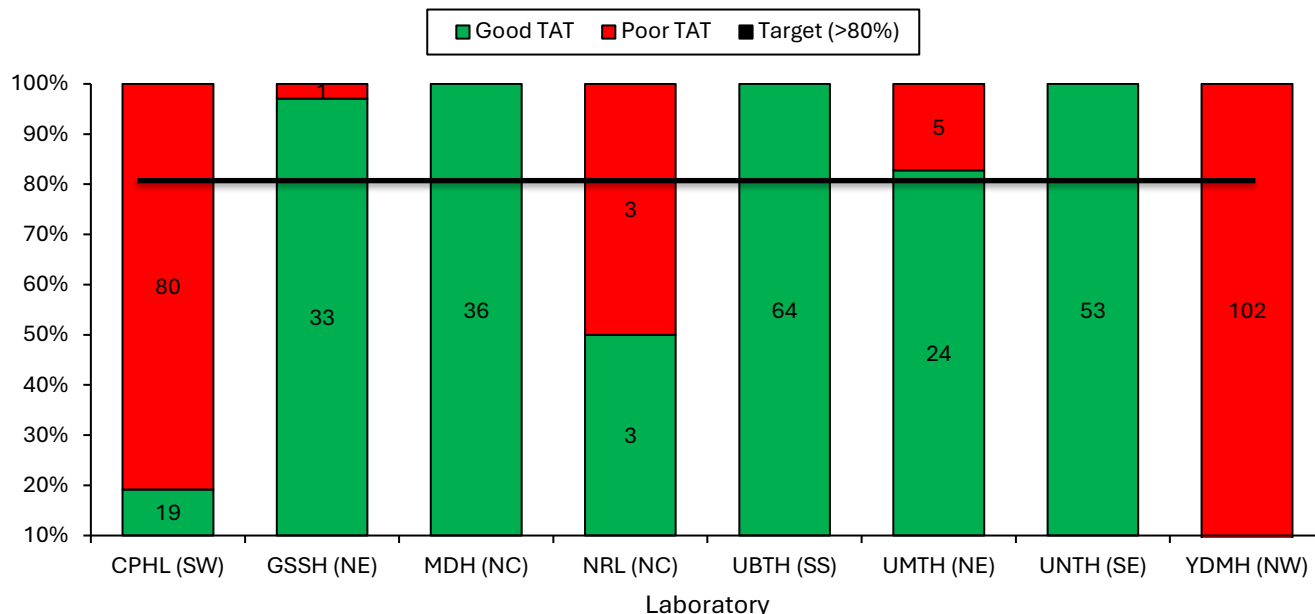


Figure 9: Proportion of measles samples with good turnaround time, January 2026

Data Source: Data Source: SORMAS, IDSR, Laboratory reports and WHO database

Key definition(s) of terminologies

suspected case: 5 or more cases in a health facility or LGA within 4 weeks

confirmed case: 3 or more positive cases in a health facility or LGA within 4 weeks.

CFR: Case fatality rate: Number of deaths in confirmed cases divided by the total number of confirmed cases multiplied by 100.

Key Indicators

number of suspected and confirmed cases, number of deaths, case fatality rate (CFR), attack rate, positivity rate, and percentage of cases investigated.

QUICK REFERENCE

Nigeria Centre for Disease Control and Prevention: www.ncdc.gov.ng

Disclaimer – This situation report is based on the best available information reported. The NCDC is not responsible for information shared with third parties or any interpretation outside what is published.