



# Measles Situation Report

August 2025

## Key Points

Table 1: Summary of the current week, cumulative Epi week, current year and comparison with the previous year

Reporting Period	Suspected cases	Confirmed cases	Deaths (Confirmed cases)	Case Fatality Ratio (CFR)	States and LGAs affected (Confirmed cases)
August 2025	148	119	0	0.0%	State(s): 13 LGA(s): 27
Jan to Aug 2025	16,536	10,891	76	0.7%	State(s): 36 + FCT LGA(s): 502
Jan. to Aug 2024	17,696	9,417	73	0.8%	State(s): 36 + FCT LGA(s): 592

### Highlights (key summary)

**In August 2025:**

- Osun (20), Kwara (13), Kogi (12), Abia (12), Akwa Ibom (11), and Enugu (10) accounted for 52.7% of the 148 suspected cases reported
- Of the suspected cases reported, 39 (26.35%) were confirmed (39 lab-confirmed & 0 epidemiologically linked, 0 clinically compatible), 91 (161.49%) were discarded & 18 (12.16%) were pending
- A total of 83 LGAs across 24 States reported at least one suspected case
- Zero (0) deaths were recorded from confirmed cases

**From January – August 2025:**

- Zamfara (4,764), Yobe (2,057), Bauchi (1,407), Kebbi (1086), Jigawa (562) and Katsina (538) accounted for 62.98% of the 16,536 suspected cases reported
- Of the suspected cases reported, 10,891 (65.86%) were confirmed (2,067 lab-confirmed, 1,732 epi-linked, and 7,092 clinically compatible), 5,037 (30.46%) were discarded, and 608 (3.68%) were pending classification
- The age group 9 - 59 months accounted for 3,290 (30.21%) of all confirmed cases
- A total of 76 deaths (CFR = 0.7%) were recorded among confirmed cases
- Up to 8,184 (75.14%) of the 10,891 confirmed cases did not receive any dose of measles vaccine (“zero doses”)

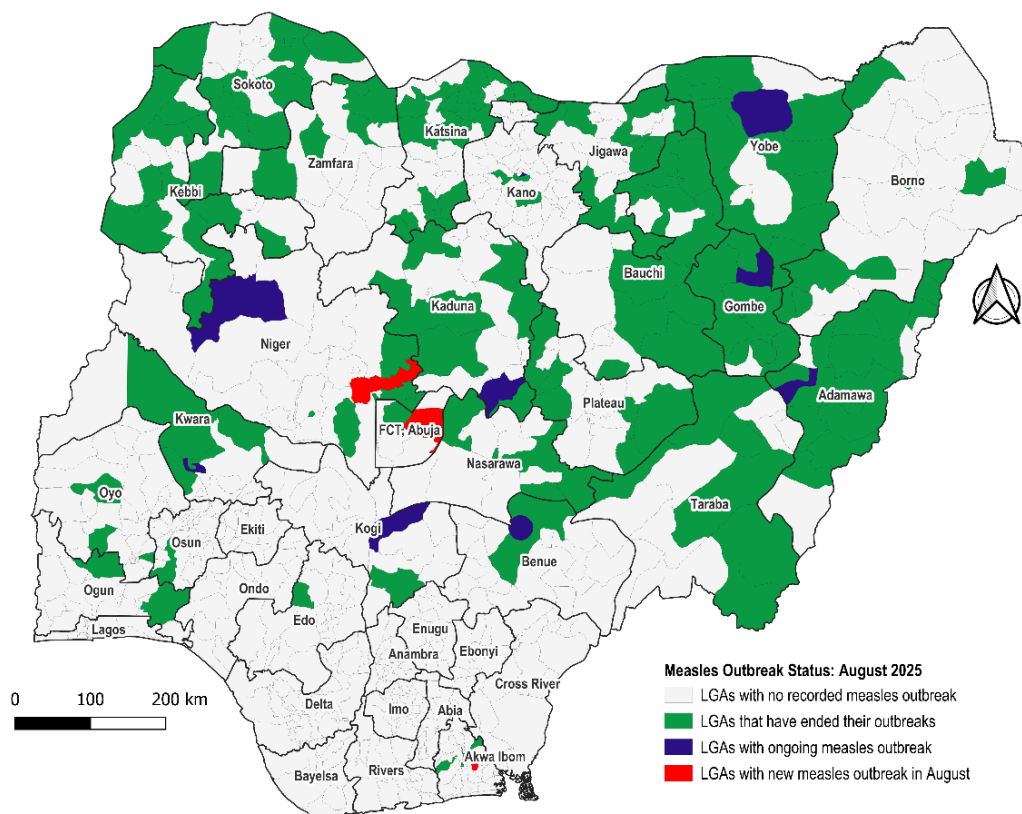
**Measles outbreaks as at August 31<sup>st</sup> 2025:**

- From January to August 2025, a total of 184 LGAs across 25 States have recorded a measles outbreak
- In August, 10 LGAs across 9 states (Adamawa, Benue, Gombe, Kaduna, Kano, Kogi, Kwara, Niger, and Yobe) have ongoing measles outbreak.
- A total of 3 LGAs across 3 states (Akwa Ibom, FCT, and Niger) recorded new measles outbreak in August 2025.

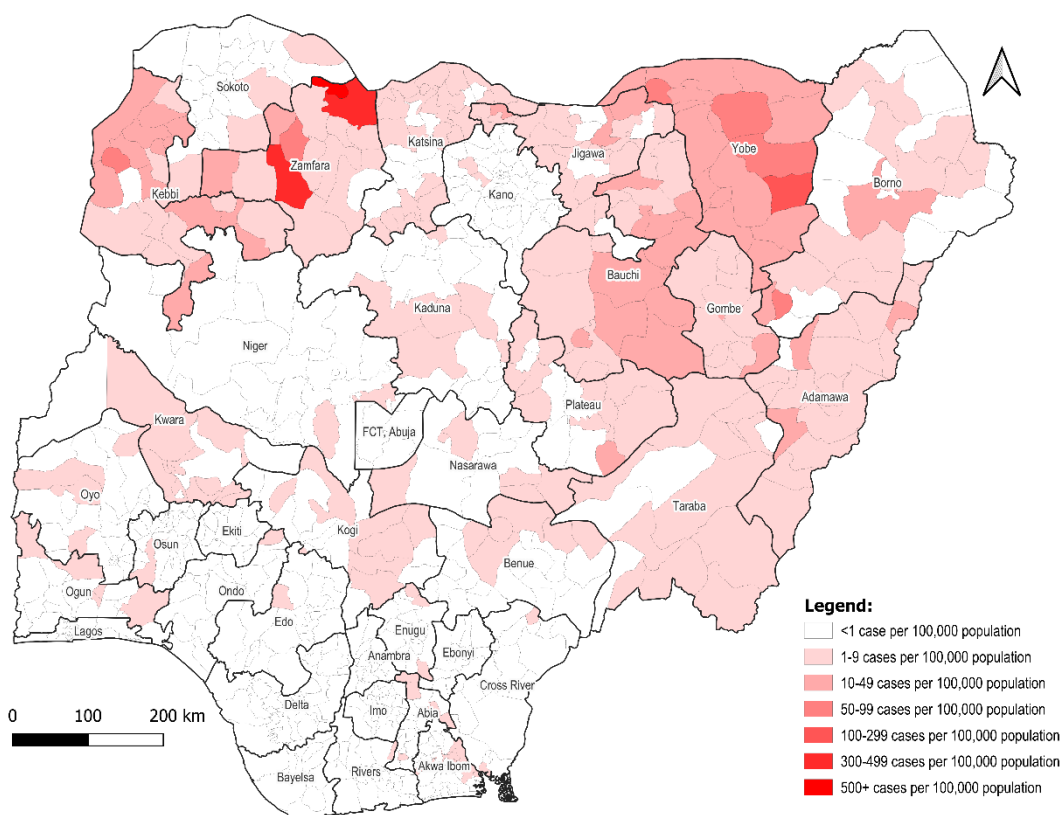
## Situation Report

Epi Week:

- Lastly, 171 LGAs across 25 states have ended their outbreaks as at end of August 2025.



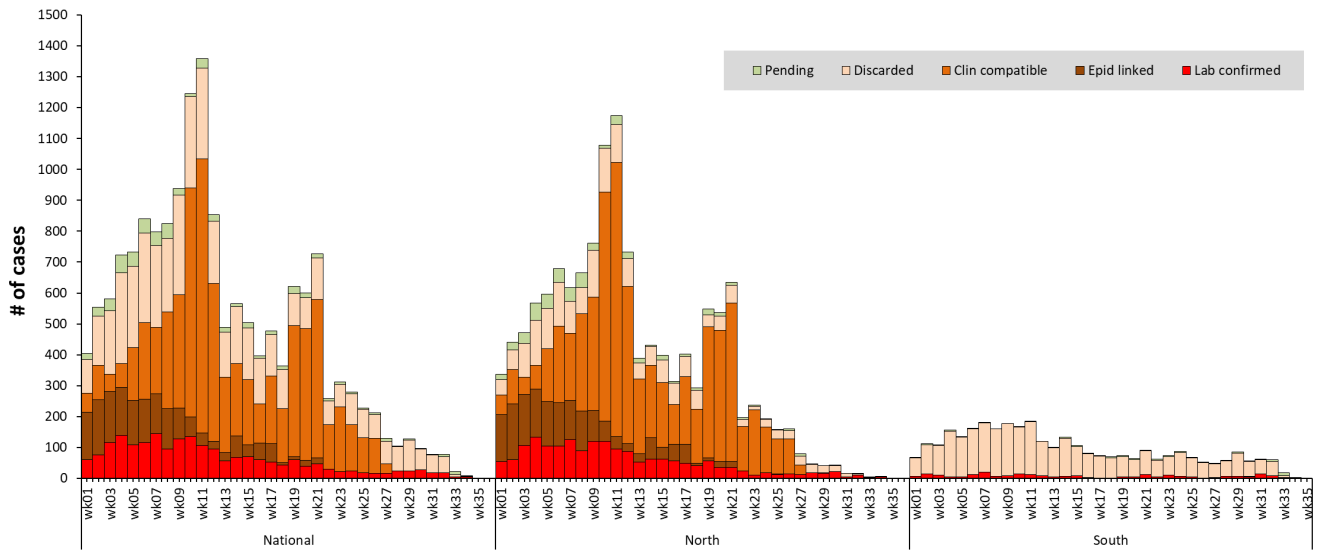
**Figure 1: Map showing the measles outbreak status in Nigeria: August 2025**



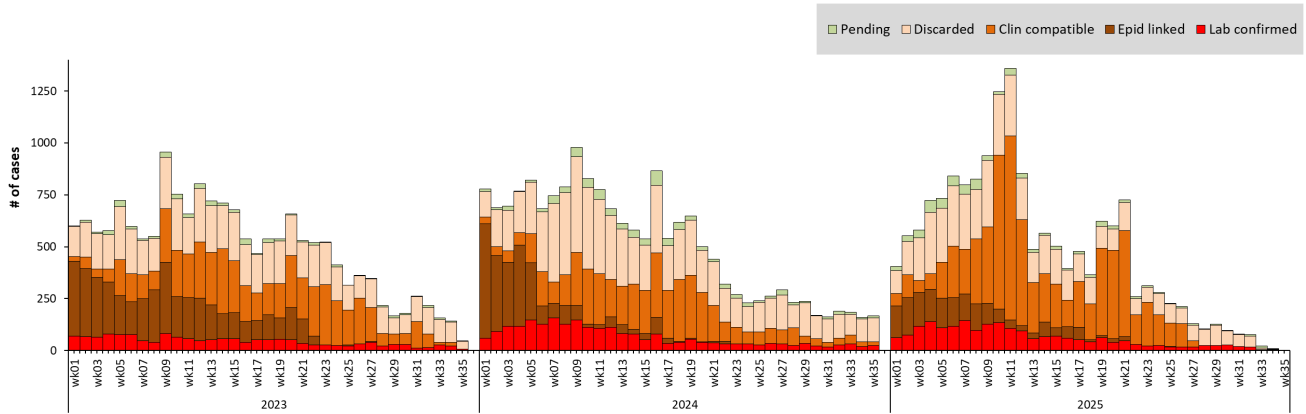
**Figure 2: Map showing Measles incidence per State/LGAs in Nigeria: Jan-Aug 2025**

# Situation Report

# Epi Week:



**Figure 3: Epi-curve of confirmed measles cases in Nigeria, 2023 – 2025 (August)**



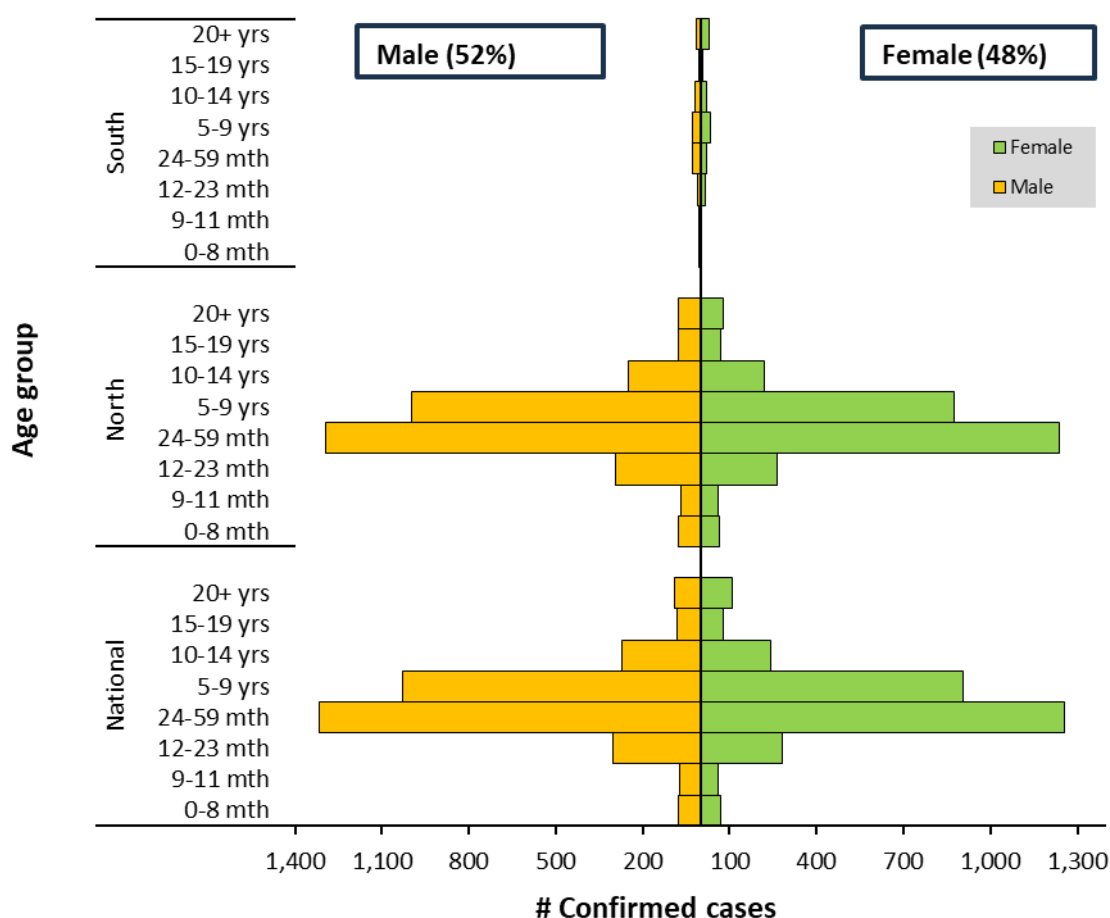
**Figure 4: Epi-curve of measles cases in Nigeria (Northern vs Southern zone), Jan - Aug, 2025**

**Table 2: Distribution of key measles surveillance variables by states, August 2025**

States	# Suspected cases	# Confirmed cases (%)	Classification of confirmed cases			% of confirmed cases aged 9-59 months	% of confirmed cases that are "zero doses"
			Lab. confirmed	Epid. linked	Clin. Compatible		
<b>NORTH</b>	<b>13,270</b>	<b>10646 (80%)</b>	<b>1,825</b>	<b>1732</b>	<b>7089</b>	<b>53.6%</b>	<b>76.5%</b>
Adamawa	489	308 (63%)	194	46	68	44.0%	100.0%
Bauchi	1,407	1293 (92%)	141	506	646	53.7%	90.5%
Benue	143	39 (27%)	39	0	0	46.2%	100.0%
Borno	436	353 (81%)	70	44	239	55.4%	72.2%
FCT, Abuja	50	12 (24%)	11	0	1	33.3%	100.0%
Gombe	409	232 (57%)	167	14	51	47.2%	86.2%
Jigawa	562	244 (43%)	199	13	32	47.1%	88.5%
Kaduna	99	52 (53%)	52	0	0	57.7%	98.1%
Kano	156	37 (24%)	37	0	0	70.3%	97.3%
Katsina	538	256 (48%)	256	0	0	46.5%	97.7%
Kebbi	1,086	979 (90%)	43	238	698	52.5%	95.1%
Kogi	143	50 (35%)	50	0	0	54.0%	92.0%
Kwara	238	85 (36%)	84	0	1	44.6%	97.6%
Nasarawa	131	43 (33%)	43	0	0	44.2%	72.1%
Niger	69	16 (23%)	15	0	1	43.8%	100.0%
Plateau	314	96 (31%)	95	0	1	33.7%	92.7%
Sokoto	41	31 (76%)	31	0	0	96.8%	100.0%
Taraba	138	87 (63%)	87	0	0	40.2%	73.6%
Yobe	2,057	1758 (85%)	155	366	1237	59.0%	11.3%
Zamfara	4,764	4675 (98%)	56	505	4114	78.6%	88.0%
<b>SOUTH</b>	<b>3,265</b>	<b>245 (8%)</b>	<b>242</b>	<b>0</b>	<b>3</b>	<b>31.7%</b>	<b>17.1%</b>
Abia	221	21 (10%)	20	0	1	31.6%	66.7%
Akwa Ibom	344	42 (12%)	42	0	0	33.3%	2.4%
Anambra	142	3 (2%)	3	0	0	66.7%	66.7%
Bayelsa	93	5 (5%)	5	0	0	80.0%	0.0%
Cross River	153	15 (10%)	15	0	0	40.0%	0.0%
Delta	151	5 (3%)	5	0	0	20.0%	0.0%
Ebonyi	52	2 (4%)	2	0	0	0.0%	100.0%
Edo	105	12 (11%)	12	0	0	50.0%	0.0%
Ekiti	243	1 (0%)	1	0	0	0.0%	0.0%
Enugu	233	22 (9%)	21	0	1	22.7%	86.4%
Imo	139	5 (4%)	4	0	1	20.0%	80.0%
Lagos	254	4 (2%)	4	0	0	25.0%	0.0%
Ogun	307	28 (9%)	28	0	0	21.4%	0.0%
Ondo	263	18 (7%)	18	0	0	33.3%	0.0%
Osun	176	15 (9%)	15	0	0	20.0%	0.0%
Oyo	234	32 (14%)	32	0	0	37.5%	0.0%
Rivers	155	15 (10%)	15	0	0	26.7%	0.0%
<b>TOTAL</b>	<b>16,536</b>	<b>10891 (66%)</b>	<b>2,067</b>	<b>1732</b>	<b>7092</b>	<b>52.7%</b>	<b>75.1%</b>

**Table 3: Trend of measles surveillance performance indicators, Jan – Aug, 2021 – 2025**

Surveillance Performance Indicator	Target	2021 (Aug)	2022 (Aug)	2023 (Aug)	2024 (Aug)	2025 (Aug)
Annualized Measles Incidence	< 1/million population	46.2	128.9	66.8	54.0	63.1
Annualized non-measles febrile rash illness (NMFRI) rate	≥ 2/100,000 population	2.0	4.2	3.2	3.9	2.7
Proportion of reported measles cases from whom blood specimen was collected	≥ 80%	40.8%	43.3%	55.6%	65.6%	46.1%
Proportion of LGAs that reported at least 1 measles case with blood specimen collected	≥ 80%	99.0%	97.5%	98.5%	99.6%	91.4%
Annualized rate of investigation (with blood specimens) of suspected measles cases	> 1/100,000 population	2.5	7.3	4.2	5.4	3.9
Proportion of lab-confirmed measles cases	< 10%	25.0%	39.0%	21.5%	24.3%	29.4%
Proportion of serum specimens arriving at measles laboratory in good condition	≥ 90%	99.1%	99.3%	98.6%	98.9%	99.1%



**Figure 5: Age-sex distribution of confirmed measles cases in Nigeria (Northern and Southern zones), Jan - Aug, 2025**

**Situation Report**  
in Epiweek

Epi Week:

A combined visual showing both the number of confirmed cases and the CFR per state, enabling identification of areas with high disease burden and mortality

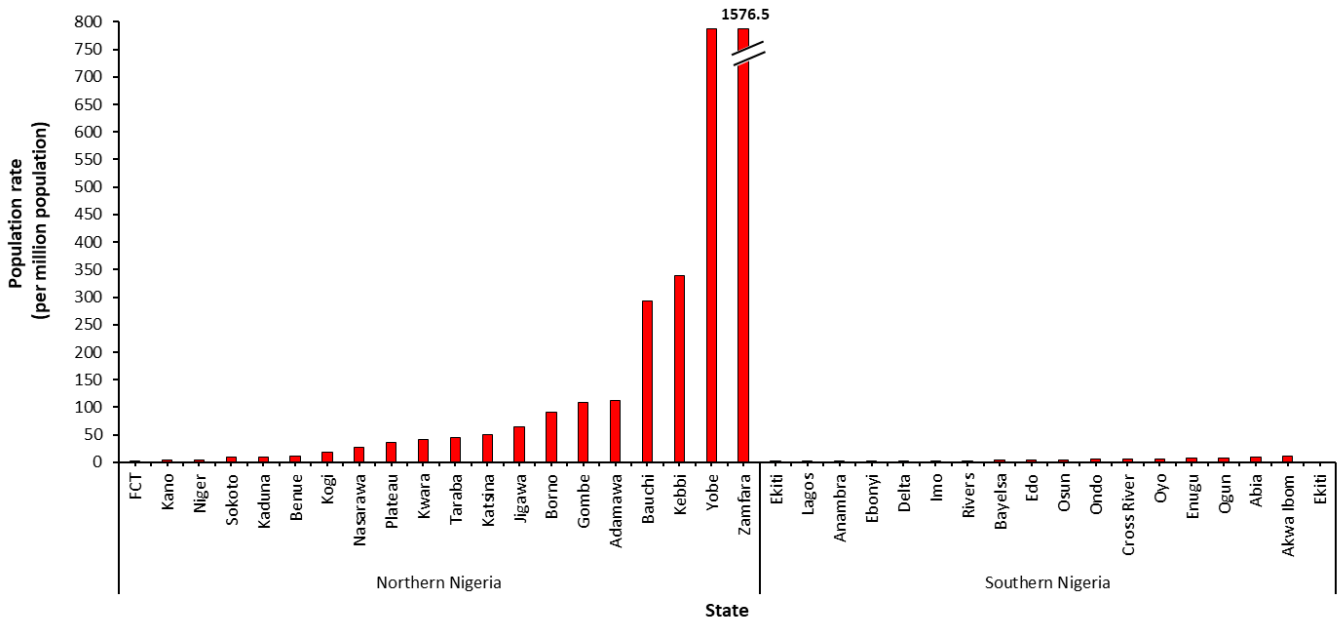


Figure 6: Incidence of confirmed measles cases in Nigeria (North and South), Jan - Aug, 2025

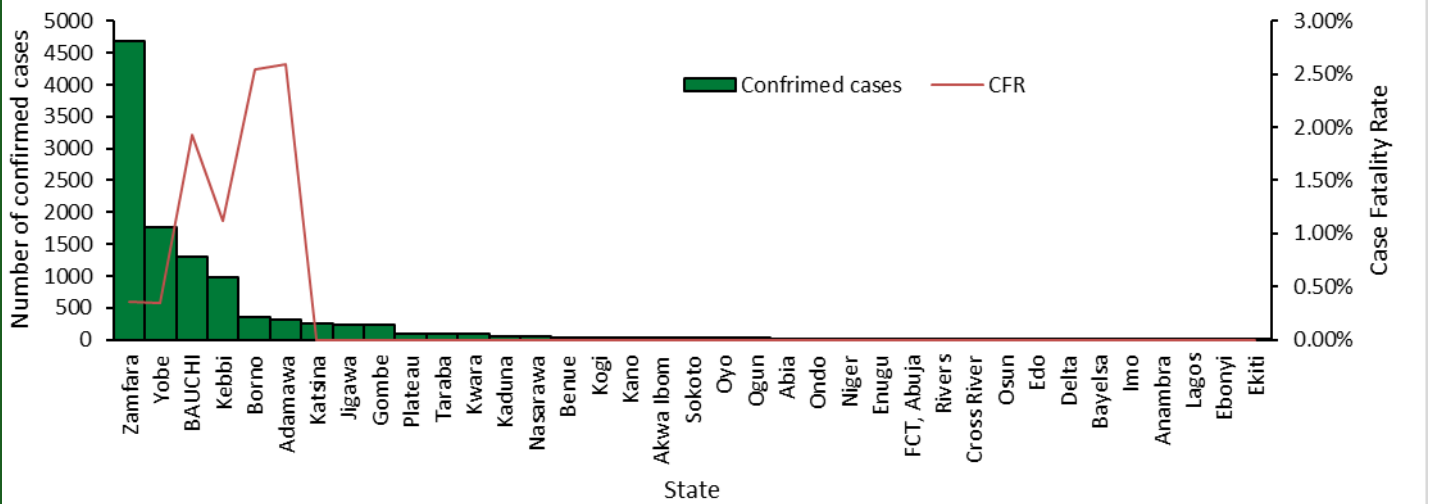


Figure 7. Confirmed cases and the corresponding Case Fatality Rate (CFR) by state, Jan – Aug, 2025

# Situation Report

Epi Week:

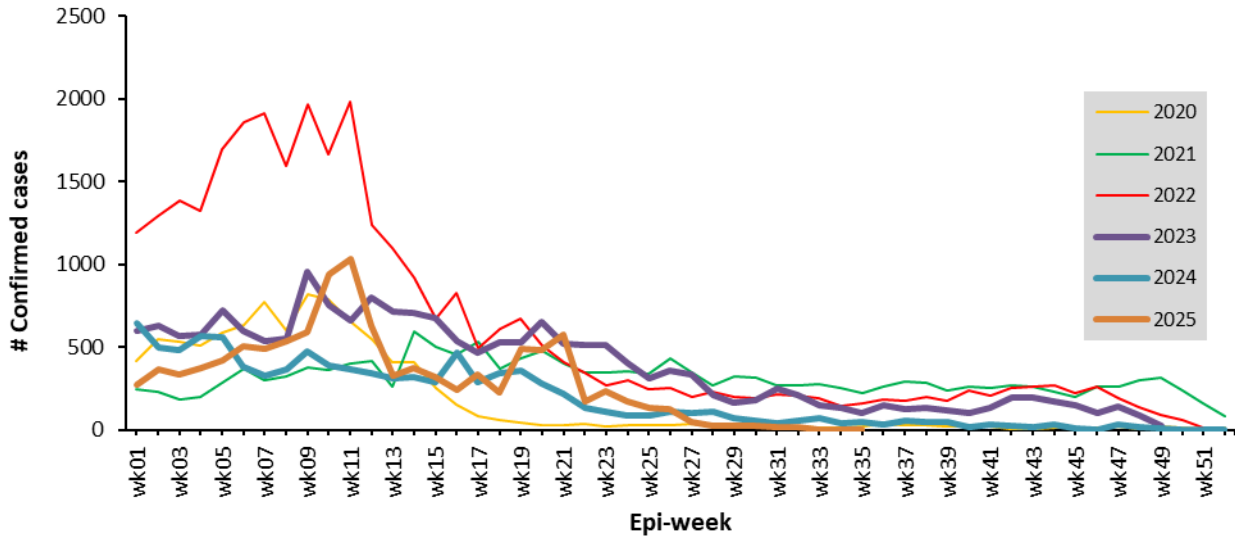


Figure 8: Trend of confirmed measles cases in Nigeria, 2020 – 2025 (epi-week 01 – 52).

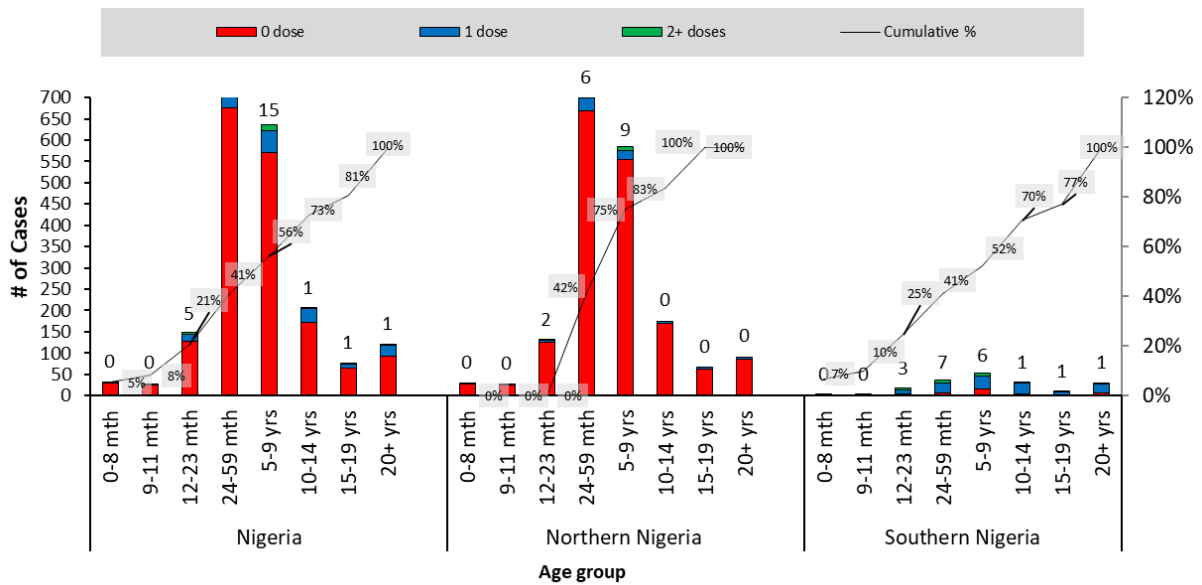


Figure 9: Vaccination status and age distribution lab confirmed measles cases in Nigeria (Northern vs Southern zone), Jan - Aug, 2025

## Situation Report

Epi Week:

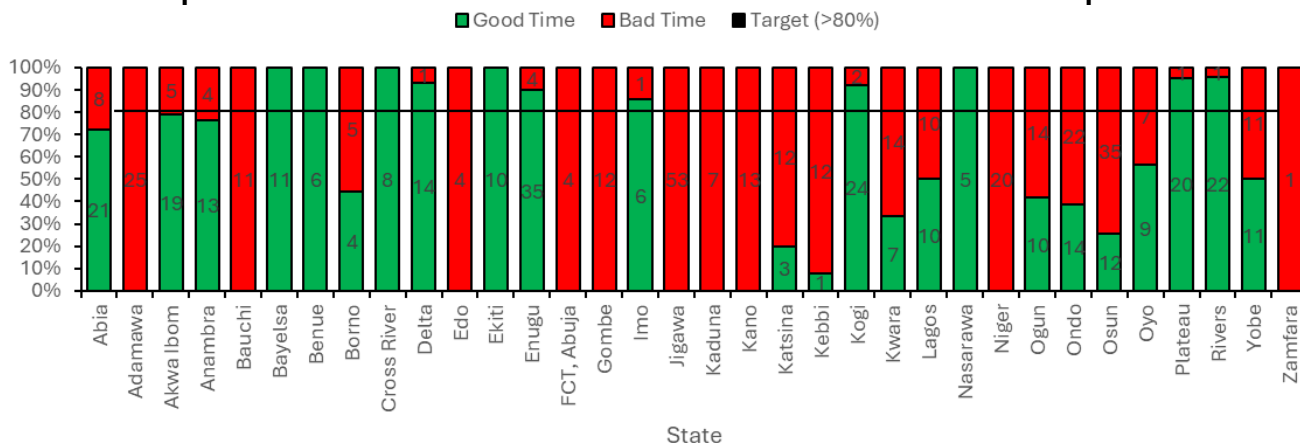


Figure 10: Proportion of measles samples reaching the laboratory in good time, August 2025

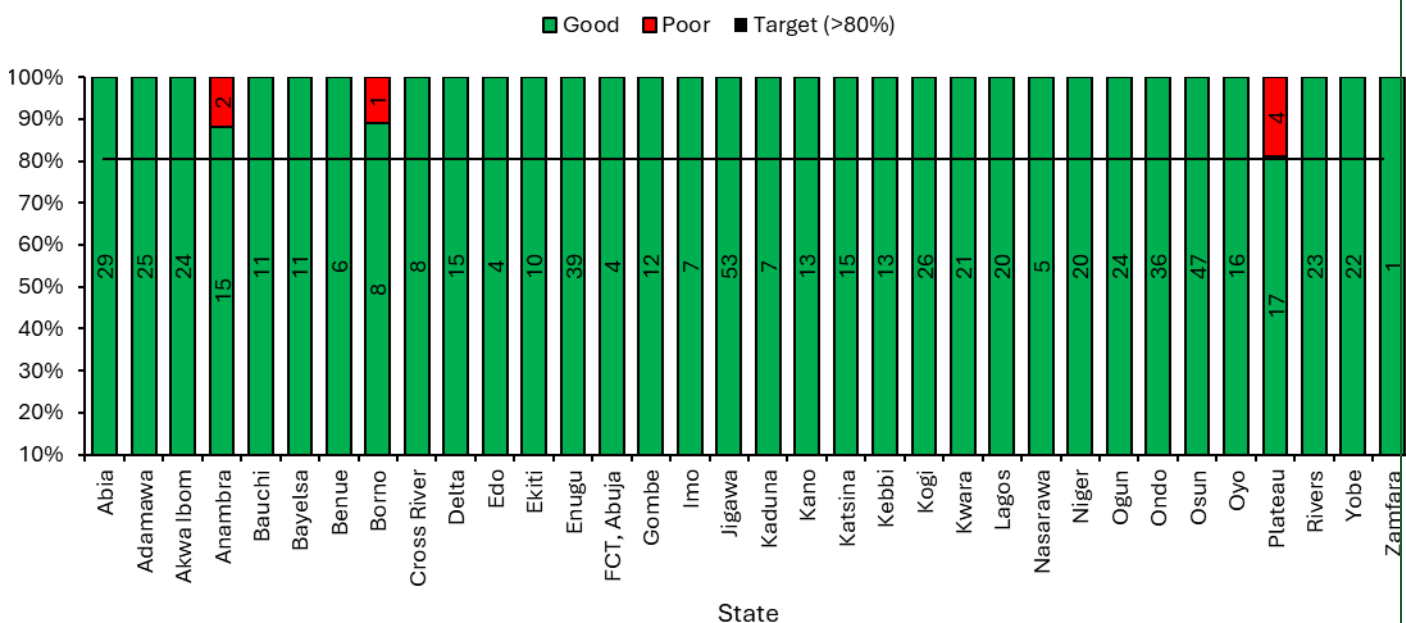


Figure 11: Proportion of measles samples getting to the lab in good condition, August 2025

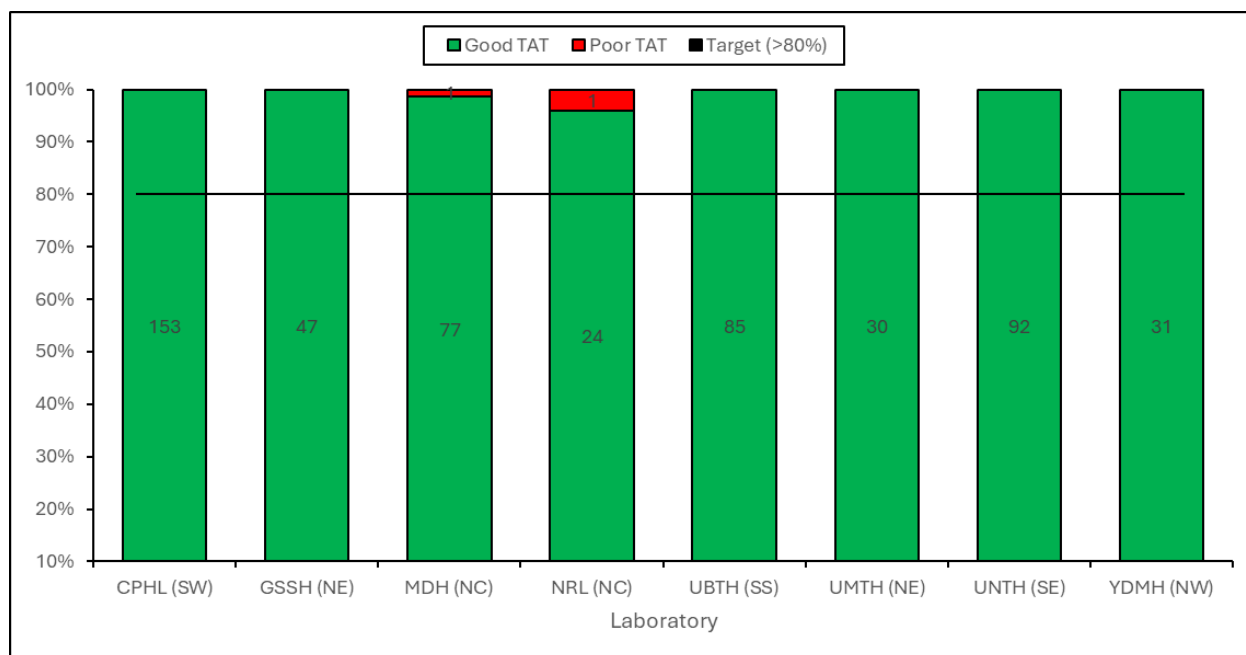


Figure 12: Proportion of measles samples with good turnaround time, August 2025